

DEPARTMENT OF THE ARMY TECHNICAL MANUAL

ORGANIZATIONAL DS, GS, AND DEPOT MAINTENANCE
REPAIR PARTS AND SPECIAL TOOLS LIST

SERVICING UNIT, MOBILE,
MULTIPURPOSE
FSN 1730-855-6108

HEADQUARTERS, DEPARTMENT OF THE ARMY
MARCH 1970

SERVICING UNIT, MOBILE, MULTIPURPOSE

FSN 1730-855-6108

Current as of 25 February 1970

Table of Contents

Section	Listing Page	Illus Figure
I Introduction	ii	
II Prescribed load allowance (PLA) (Not applicable)		
III Repair parts for organizational maintenance		
Group		
07 Electrical control circuitry	3	19
08 Instrument and control panel	3	21
Section		
IV Special tools, test and support equipment (Not applicable)		
V Repair parts for direct support, general support, and depot maintenance		
Group		
02 Trailer	6	2
03 Engine	9	5
04 Hydraulic system	17	8
05 AC generating system	33	19
06 DC generator system	34	20
07 Electrical control circuitry	34	20
08 Instrument and control panel	36	21
09 Miscellaneous electrical components	37	19
Section		
VI Special tools, test and support equipment (Not applicable)		
VII Federal stock number and reference number index	38	

SECTION I

INTRODUCTION

1. Scope.

This manual lists the repair parts required for the performance of organizational, direct support, general support and depot maintenance of Servicing Unit, Mobile, Multipurpose FSN 1780855-6108.

2. General.

This Repair Parts and Special Tools List is divided into the following sections:

a. *Prescribed Load Allowance (PLA) Section II.* Not applicable.

b. *Repair Parts--Section III.* A list of repair parts authorized for the performance of maintenance at the organizational level.

c. *Special Tools, Test and Support Equipment--Section IV.* Not applicable.

d. *Repair Parts--Section V.* A list of repair parts authorized -for the performance of maintenance at the direct support, general support, and depot level.

e. *Special Tools, Test and Support Equipment--Section VI.* Not applicable.

f. *Federal Stock Number and Reference Number Index--Section VII.* This section is divided as follows:

(1) A list of Federal stock numbers in ascending numerical sequence cross-referenced to the illustration figure and item number.

(2) A list of reference numbers is ascending alphanumeric sequence cross-referenced to the manufacturers Federal supply code, illustration figure and item number.

3. Explanation of Columns.

The following provides an explanation of columns in the tabular lists in sections III and V:

a. *Source, Maintenance and Recoverability Codes (SMR).*

(1) *Source Code.* Indicates the selection status and source for the listed item. Source codes are:

<i>Code</i>	<i>Explanation</i>
P	Repair parts, special tools and test equipment supplied from the GSA/DSA, or Army supply system, and authorized for use at indicated maintenance categories.

<i>Code</i>	<i>Explanation</i>
P2	Repair parts, special tools and test equipment which are procured and stocked for insurance purposes because the combat or military essentiality of the end item dictates that a minimum quantity be available in the supply system.
P9	Assigned to items which are NSA design controlled: unique repair parts, special tools, test, measuring and diagnostic equipment, which are stocked and supplied by the Army COMSEC Logistic System and which are not subject to the provisions of AR 8841.
P10	Assigned to items which are NSA design controlled: special tools, test, measuring and diagnostic equipment for COMSEC support, which are accountable under the provisions of AR 880-41, and which are stocked and supplied by the Army COMSEC Logistic System
M	Repair parts, special tools and test equipment which are not procured or stocked as such in the supply system, but are to be manufactured at indicated maintenance levels.
A	Assemblies which are not procured or stocked as such, but are made up of two or more units. Such component units carry individual stock numbers and descriptions, are procured and stocked separately and can be assembled to form the required assembly at indicated maintenance categories.
X	Parts and assemblies that are not procured or stocked because the failure rate is normally below that of the applicable end item of component. The failure of such part or assembly should result in retirement of the end item from the supply system.
X1	Repair parts which are not procured or stocked. The requirement for such items will be filled by the next higher assembly or component.
X2	Repair parts, special tools, and test equipment which are not d and have no foreseen mortality. The indicated maintenance category requiring such repair parts will attempt to obtain the parts through cannibalization or salvage. The item may be requisitioned with exception data, from the end item manager, for immediate use.

<i>Code</i>	<i>Explanation</i>
G	Major assemblies that are procured with PEMA funds for initial issue only as exchange assemblies at DSU and GSU level. These assemblies will not be stocked above the DS and GS level or returned to depot supply level.

Note: Cannibalization or salvage may be used as a source of supply for any items source coded above except those coded X1 and aircraft support items as restricted by AR 700-42.

- (2) Maintenance Code. Indicates the lowest category of maintenance authorized to install the listed item. Maintenance level codes are:

<i>Code</i>	<i>Explanation</i>
C	Crew or operator maintenance.
O	Organizational maintenance.
F	Direct support maintenance.
H	General support maintenance.
D	Depot maintenance.

- (3) Recoverability Code. Indicates whether unserviceable items should be returned for recovery or salvage. Items not coded are expendable:

<i>Code</i>	<i>Explanation</i>
R	Applied to repair parts, (assemblies and components) special tools and test equipment which are considered economically repairable at direct support and general support levels. When the item is no longer economically repairable, it is normally disposed of at the GS level. When supply considerations dictate, some of these repair parts may be listed for automatic return to supply for depot level repair as set forth in AR 710-50. When so listed, they will be replaced by supply on an exchange basis.
S	Repair parts, special tools, test equipment and assemblies which are economically repairable at DSU and GSU activities and which normally are furnished by supply on an exchange basis. When items are determined by a GSU to be uneconomically repairable, they will be evacuated to a depot for evaluation and analysis before final disposition
T	Higher dollar value recoverable repair parts, special tools and test equipment which are subject to special handling and are issued on an exchange basis. Such items will be repaired or overhauled at depot maintenance activities only. No repair may be accomplished at lower levels.
U	Repair parts, special tools and test equipment specifically selected for salvage by reclamation units because of precious metal content, critical materials, high dollar value or reusable casings or castings.

b. *Federal Stock Number.* Indicates the Federal stock number assigned to the item and will be used for requisitioning purposes. Items source coded A, M, or X1 are not assigned a Federal stock number.

c. *Description.* Indicates the Federal item name and any additional description of the item required. The description column contains the following subcolumns.

- (1) Reference Number and Manufacturers Code. Indicates a part number or other reference number for the listed item followed by the applicable five-digit Federal supply code for manufacturers, in parentheses.
- (2) Usable on Code. Not applicable.

d. *Unit of Measure (U/M).* A two-character alphabetic abbreviation indicating the amount or quality of the item upon which the allowances are based (e.g., ea, ft, pr).

e. *Quantity Incorporated in Unit.* Indicates the quantity of the item used in the assembly. A "V" appearing in this column instead of a quantity indicates that a definite quantity cannot be shown.

f. *Fifteen-Day Organizational Maintenance Allowances.*

- (1) The allowance column is divided into four subcolumns. Indicated in each subcolumn opposite the first appearance of each item is the total quantity of items authorized for the number of equipments supported. Subsequent appearances of the same item will have the letters "REF" in the allowance columns. Items authorized for use as required, but not for initial stockage are identified with an asterisk (*) in the allowance column.
- (2) The quantitative allowances for organizational level of maintenance represents one initial prescribed load for a 16day period for the number of equipments supported. Units and organizations authorized additional prescribed loads, will multiply the number of prescribed loads authorized by the quantity of repair parts reflected in the appropriate density column to obtain the total quantity of repair parts required.
- (3) Organizational units providing maintenance for more than 100 of these equipments, shall determine the total quantity of repair parts required by converting the equipment quantity to a decimal factor by placing a decimal point before

the next to last digit of the number to indicate hundredths, and multiplying the decimal factor by the parts quantity authorized in the 51-100 allowance column. Example, authorized allowance for 51-100 equipments is 12; for 140 equipments multiply 12 by 1.40 or 16.80 rounded off to 17 parts required.

- (4) Subsequent changes to allowances will be limited as follows. No changes in the range of items is authorized. If additional items are considered necessary, recommendations should be forwarded to the Commanding General, U.S. Army Aviation Systems Command, P. O. Box 209, St. Louis, MO 68166 for exception or revision to the allowance list. Revisions to the range of items authorized will be made by the U. S. Army Aviation Systems Command based upon engineering experiences demand data or TAERS information.

g. Thirty-Day DS/GS Maintenance Allowances.

- (1) The allowance column is divided into three subcolumns. Indicated in each subcolumn, opposite the first appearance of each item, is the total quantity of items authorized for the number of equipments supported. Subsequent appearances of the same item will have the letters "REF" in the applicable allowance columns. Items authorized for use as required, but not for initial stockage are identified with an asterisk (*) in the allowance column.
- (2) The quantitative allowances for DS/GS levels of maintenance will represent initial stockage for a 80-day period for the number of equipments supported. The basis of issue for authorized special tools, test and support equipment is the number of end items of equipment supported.
- (3) Determination of the total quantity of parts required for maintenance of more than 100 of these equipments, can be accomplished by converting the equipment quantity to a decimal factor by placing a decimal point before the next to last digit of the number to indicate hundredths, and multiplying the decimal factor by the parts quantity authorized in the 51-100 allowance column. Example, authorized allowance for 51-100 equipments is 40; for

150 equipments multiply 40 by 1.50 or 60 parts required.

h. On-Year Allowances for 100 Equipments/Contingency Planning Purposes. When applicable, this column indicates opposite the first appearance of each item the total quantity required for distribution and contingency planning purposes. The range of items indicates total quantities of all authorized items required to provide adequate support of 100 equipments for 1 year.

i. Depot Maintenance Allowance Per 100 Equipments. Indicates opposite the first appearance of each item the total quantity authorized for depot maintenance of 100 equipments. Subsequent appearances of the same item will have the letters "REF" in this column. Items authorized for use as required, but not for initial stockage are identified with an asterisk (*) in the allowance column.

j. Illustration This column is divided as follows:

- (1) Figure Number. Indicates the figure number of the illustration in which the item is shown.
- (2) Item Number. Indicates the callout number to reference the item in the illustration.

4. How to Locate Rewire Parts.

a. When Federal stock number or reference number is unknown:

- (1) *First.* Find the illustration of the assembly or subassembly to which the repair part belongs.
- (2) *Second.* Identify the repair part on the illustration and note the illustration figure and item number of the repair part.
- (3) *Third.* Using the Repair Parts Listing, find the figure and item number listed in the illustration column.

b. When Federal stock number or reference number is known:

- (1) *First.* Using the index of Federal stock numbers and reference numbers, find the pertinent Federal stock number or reference number. This index is in ascending Federal stock number sequence followed by a list of reference numbers in ascending alphanumeric sequence, cross-referenced to the illustration figure and item number.

- (2) *Second.* Using the Repair Parts Listing, find the figure and item number listed in the illustration column referenced in the index of Federal stock numbers and reference numbers.

<i>Code</i>	<i>Manufacturers and Location</i>
75915	Littlefuse Inc 800 E Northwest Hwy Des Plaines IL 60016
76445	Monroe Auto Equipment Co 1426 East First St Monroe MI 48161
77521	Racine Hydraulics and Machinery Inc 2000 Albert St Racine WI 5340477890 Service Products Corp 201 S Rural St Indianapolis IN 46201
81321	Purolator Inc 970 New Brunswick Ave Rahway NJ 07065
81349	Military Specifications Promulgated by Standardization Div Directorate of Logistic Services DSA
81996	Army Aviation Systems Command 12th and Spruce Sts St Louis MO 63102
82386	Sun Electric Corp 6821 Avondale Ave Chicago IL 606831
86768	Republic Mfg Co 15655 Brookpark Road Cleveland OH 44135
88044	Aeronautical Standards Group Dept of Navy and Air Force
90005	Bendix Corp The Filter Division 434 W Twelve Mile Road PO Box 13i Madison Heights MI 48071
92687	National Electric Specialty Co Toledo OH
96259	Fluid Controls Inc PO Box 49 Mentor OH 44060
96906	Military Specifications Promulgated by Standardization Div Directorate of Logistic Services DSA
97545	Dukes Co Inc 3999-A N 25th Ave Schiller Park IL 60176
99664	United Manufacturing Division of UMC Electronics Co 460 Sacket Point Road North Haven CT 06473

5. Federal Supply Codes for Manufacturers

<i>Code</i>	<i>Manufacturers and Location</i>
00624	Aeroquip Corp Aircraft Division Jackson Plant 300 S East Ave Jackson MI 49203
01414	Aircraft Porous Media Inc 30 Sea Cliff Ave Glen Cove NY 11542
01843	American Bosch Div of American Bosch Arma Corp Springfield MA
02386	Highland Auto and Truck Supply 1536 N Indiana St Los Angeles CA 90063
03510	General Electric Co Small Motor Dept 1605 Winter St Fort Wayne IN 46804
04009	Arrow-Hart and Hegeman Co 103 Haw- thorne St Hartford CT 06106
12027	Racine Hydraulics and Machinery Inc Kline Division 2000 Albert St. Racine WI 58404
15233	Cerlist Engine Division Waukesha Motor Co 1812 So Fourth St Clinton IA.52732
15238	ITT Semiconductors A Division of Inter- national Telephone and Telegraph Corp 500 Broadway Lawrence MA 01841
24981	Gits Bros Mfg Co 1848 Kilbourn Ave Chicago IL 60623
28835	Hobart Brothers Co The W Main Troy OH 45373
43334	New Departure-Hyatt Bearings Division General Motors Corp Hayes Ave San- dusky OH 44870
43991	Norma-Hoffman Bearings Corp Hamilton Ave Stamford CT 06904
47296	Pine Wm S Inc 1635 E 22nd St. PO Box 11155 Los Angeles CA 90011
60380	Torrington Co The 59 Field Torrington CT 06790
61112	Turner Corp 821 Park Ave Sycamore IL 60178
70417	Chrysler Corp Amplex Division 6501 Harper Ave Detroit MI 48311
71951	Doray Lamp Co Inc 1466 S Michigan Chicago IL 60605
72850	Bendix Corp The Motor Components Division 18th and Oakwood Ave Elmira NY 14903

6. Recommendations for Maintenance Publications Improvements.

Report of errors, omissions, and recommendations for improving this publication by the individual user is encouraged. Reports should be submitted on DA Form 2028 (Recommended Changes to DA Publications) and forwarded direct to the Commanding General, U.S. Army Aviation Systems Command, ATTN: AMSAV-R-MLRA, P. O. Box 209, St. Louis, MO 68166.

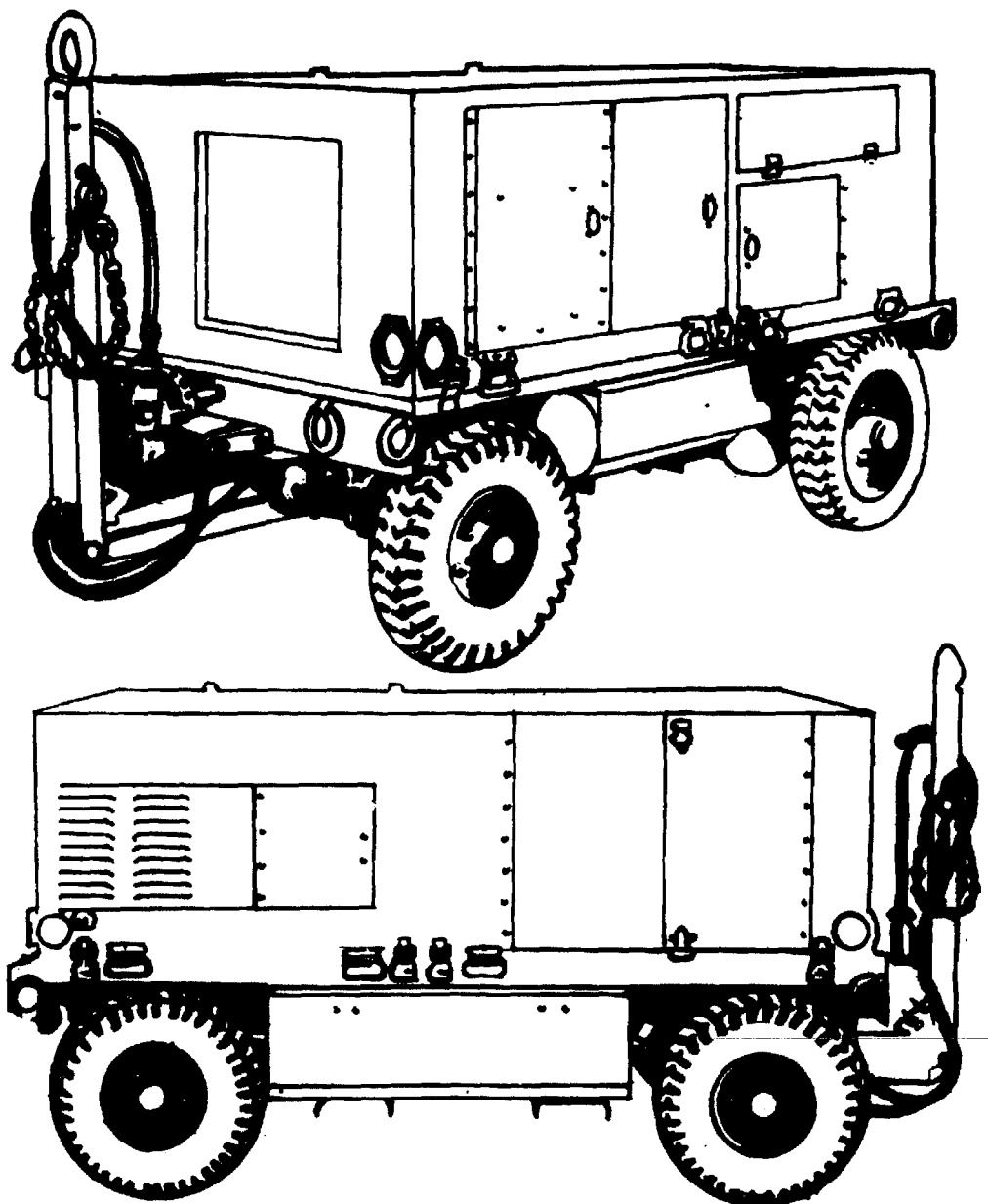


Figure 1. Servicing Unit, Mobile, Multi-Purpose

(1) SMR CODE	(2) FEDERAL STOCK NUMBER	(3) DESCRIPTION REFERENCE NUMBER & MFR CODE USABLE ON CODE		(4) UNIT OF MEAS	(5) QTY INC IN UNIT	(6) 15 DAY ORGANIZATIONAL MAINTENANCE ALW				(7) ILLUSTRATION		
						(a)	(b)	(c)	(d)	(a)	(b)	
						1-5	6-20	21-50	51-100	FIGURE NO.	ITEM NO.	
	1730-855-6108	C520-1000	(82386)	GROUP 01 SEKVICING UNIT, MOBILE MULTIPURPOSE	EA					1		
	6220-669-5623	MS51329-1	(96906)	SECTION III REPAIR PARTS GROUP 07 ELECTRICAL CONTROL CIRCUITRY								
P--O-T		MS51329-1	(96906)	STOPLIGHT-TAILLIGHT,BLOCKOUT ... TAIL	EA	1	*	*	*	*	19	15
	5935-581-4558	MS125043-16C	(96906)	GROUP 08 INSTRUMENT AND CONTROL PANEL								
P—O-- P—O--	5355-538-7331	MS25166-1	(96906)	COVER,ELECTRICAL KNOB	EA EA	1 2	* *	* *	* *	* *	21 21	8 36

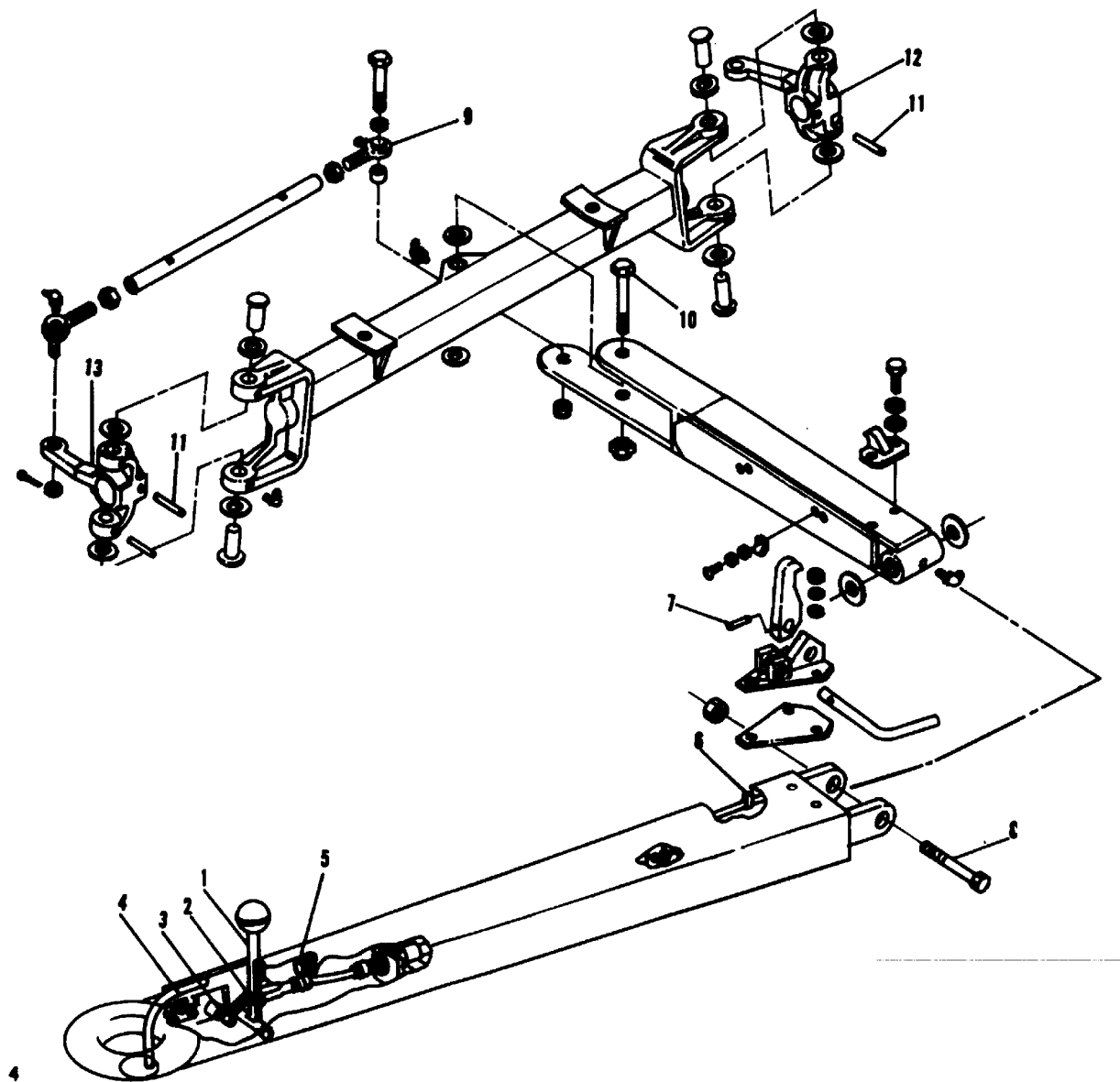


Figure 2. Axle and Steering-Assembly

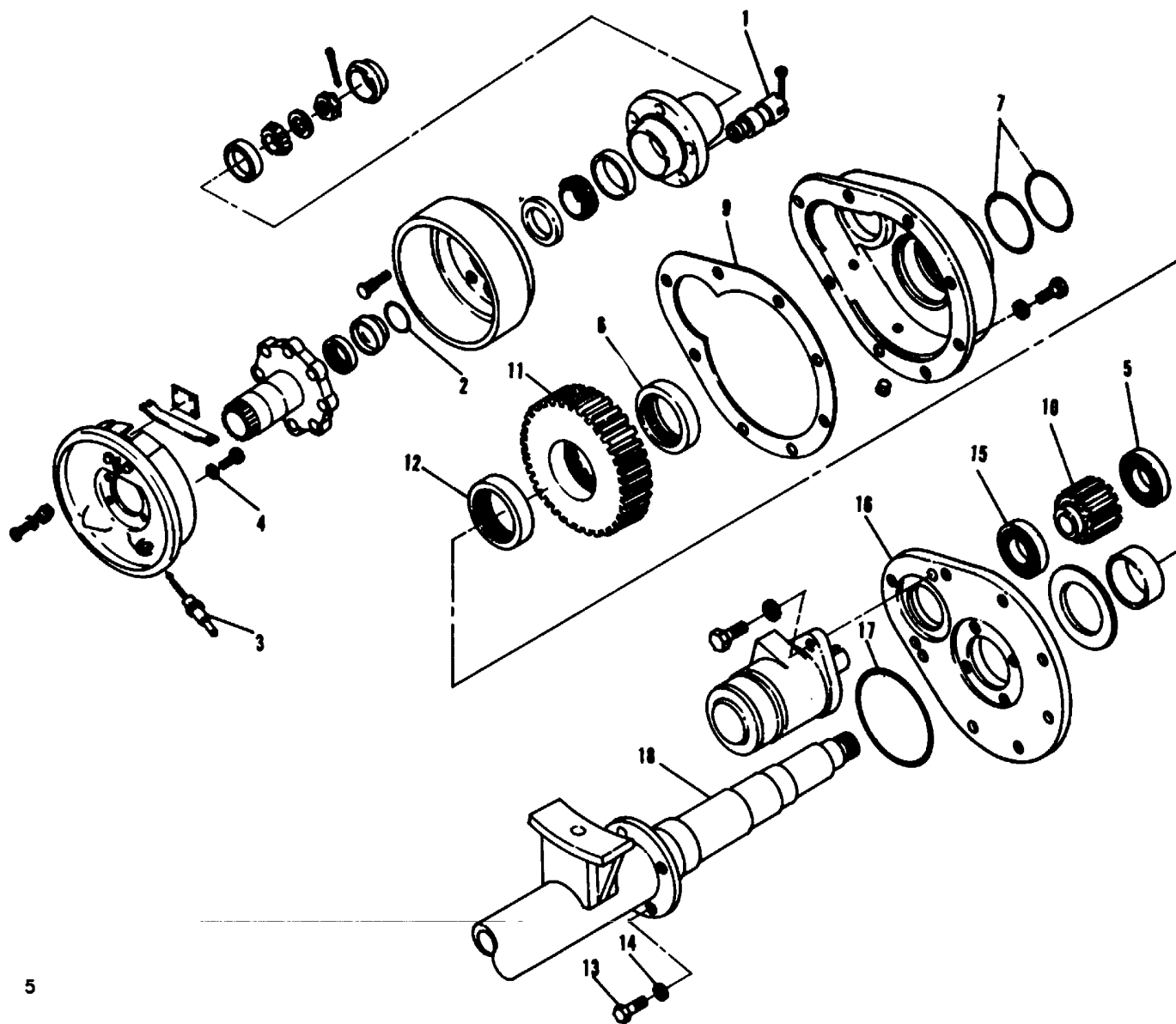


Figure 3. Rear Axle Assembly

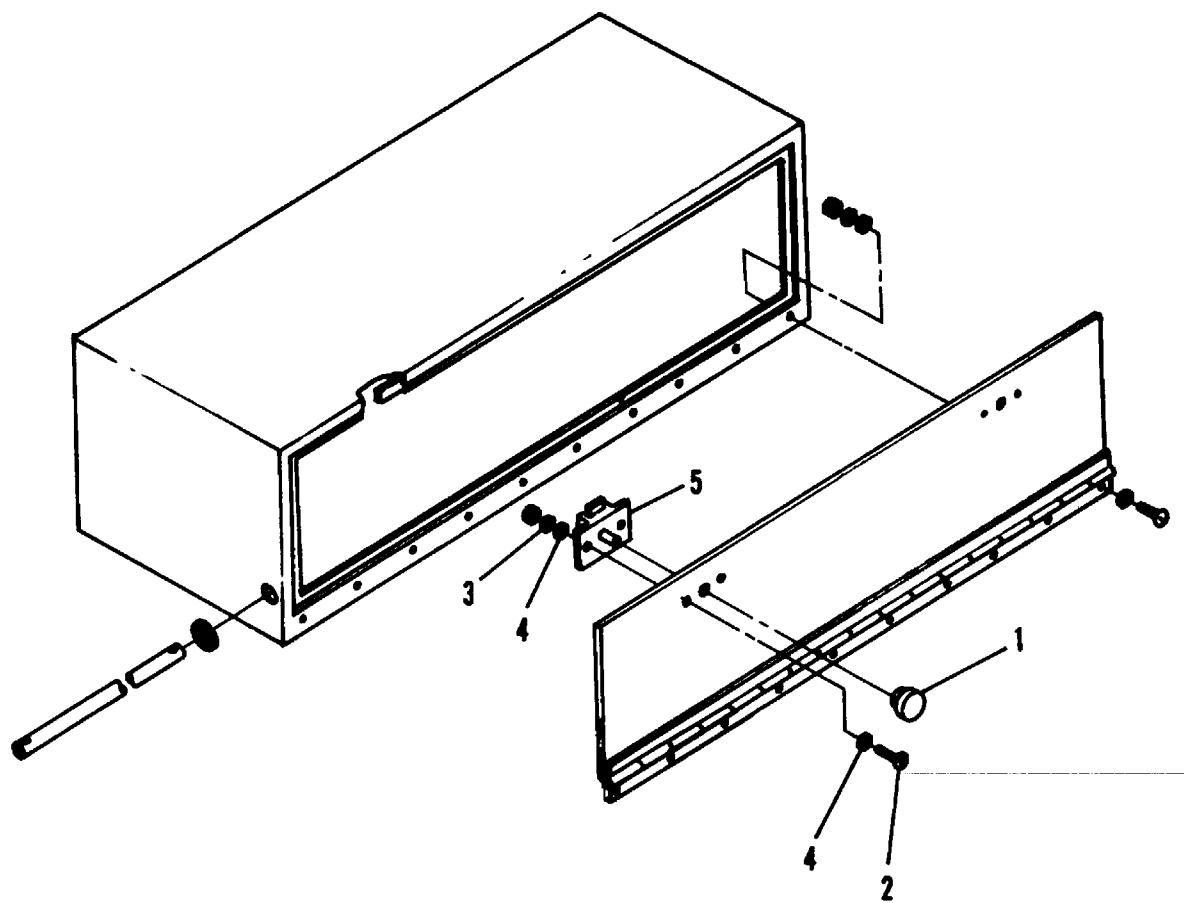


Figure 4. Storage Bin (Electrical)

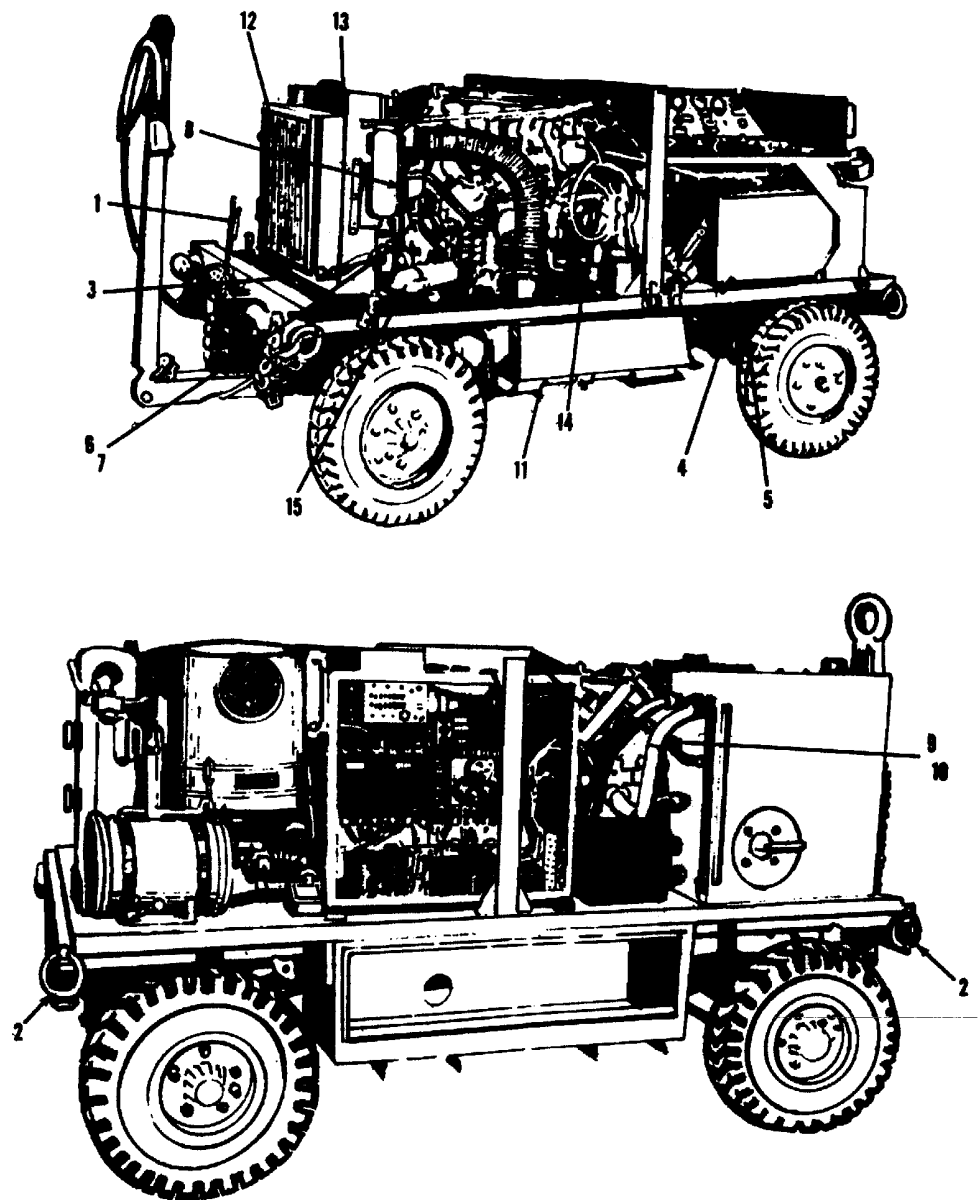


Figure 5. Engine

(1) SMR CODE	(2) FEDERAL STOCK NUMBER	(3) DESCRIPTION REF. NUMBER & MFR CODE		USABLE ON CODE	(4) UNIT OF MEAS	(5) QTY INC IN UNIT	(6) 30 DAY DS/GS MAINT ALW			(7) 1-YR ALW PER EQUIP CNTGY	(8) DEPOT MAINT ALW PER 100 EQUIP	(9) ILLUSTRATION		
							(a)	(b)	(c)			(a) FIG. NO.	(b) ITEM NO.	
							1-20	21-50	51-100					
GROUP 02 CONTINUED														
P--F--	3020-454-7951	8000-9010	(82386)		GEAR ASSEMBLY	EA	2	*	*	*			3	
P--F--	1730-369-9533	8000-9011	(82386)		..GEAR,SERVICING UNIT	EA	2	*	*	*			3	11
P--F--	3110-065-4599	NB4012	(60380)		..BEARING,ROLLER,NEEDLE	EA	2	*	*	*			3	12
P--F--	5306-206-6266	AN6H7A	(88044)		..BOLT,MACHINE,back plate -mtg	EA	8	*	*	*			3	13
P--H--	5330-463-0471	K102-50	(95026)		..WASHER,SEALING,back plate mtg	EA	8	*	*	*			3	14
P--F--	3110-554-2916	S12 1-2RTF	(43991)		..BEARING,BALL, ANNULAR	EA	1	*	*	*			3	15
P--F--	1730-178-1274	8000-9009	(82386)		..PLATE,GEAR BOX	EA	1	*	*	*			3	16
P--H--	5330-815-8860	MS28775-145	(96906)		..PACKING,PREFORMED	EA	1	*	*	*			3	17
X2-H	2530-454-7878	C614-1093	(82386)		..AXLE ASSEMBLY,REAR	EA	1						3	18
X2-F	2530-801-2736	MS24325-2	(96906)		WHEEL,PNEUMATIC TIRE	EA	4						3	
		C614-1081	(82386)		STORAGE BIN,electrical cable		1						4	
P--F--	5355-833-3608	1414-003	(82386)		..KNOB	EA	2	*	*	*			4	1
P--F--	5305-958-5477	MS35190-254	(96906)		..SCREW,MACHINE,latch mtg	EA	4	*	*	*			4	2
P--F--	5310-045-3299	MS35338-42	(96906)		..WASHER,LOCK,latch mtg	EA	4	*	*	*			4	3
P--F--	5310-809-8544	MS27183-7	(96906)		..WASHER,FLAT,latch mtg	EA	8	*	*	*			4	4
P--F--	5340-948-0732	1409-504	(82386)		..LATCH ASSEMBLY	EA	2	*	*	*			*	4
		5												
P--F--	4710-484-0683	623-015	(82386)		..TUBE, PLASTIC	EA	1	*	*	*			4	
X2-F	2530-248-3709	8000-9032	(82386)		BRAKE ASSEMBLY,HAND	EA	1						5	1
P--F--	5315-816-1794	MS24665-285	(96906)		..PIN,COTTER	EA	2	*	*	*			5	
P--F--	5310-809-8533	MS27183-23	(96906)		..WASHER,FLAT	EA	1	*	*	*			5	
X2-F	5340-055-8649	48B7796	(88042)		RING ASSEMBLY,tiedown	EA	8						5	2
P--F--	2990-824-2172	154-009	(82386)		CABLE,CONTROL,push-pull	EA	1	*	*	*			5	3
X2-F	2510-460-6804	4083-503	(82386)		SPRING,LEAF	EA	4						5	4
P--F--	2540-455-5758	1058	(76445)		SHOCK ABSORBER,LEVER ACTIOI	EA	4	*	*	*			5	5
GROUP 03 ENGINE ASSEMBLY														
P--F--	3030-062-8381	AX42	(71198)		BELT,V,piston pump	EA	1	*	*	*			5	6
X2-F		659-037	(82386)		PULLEY,GROOVE,piston pump	EA	1						5	7
X2-F		1AC63	(81300)		PULLEY,GROOVE	EA	1						5	8
P--F--	3030-529-0345	MS39255A3	(96906)		BELT,V	EA	1	*	*	*			5	9
X2-F		659-039	(82386)		PULLEY,GROOVE	EA	1						5	10
X2-F		0102-5003	(82386)		MUFFLER,EXHAUST	EA	1						5	11
P--F--	2930-420-7788	0111-5701	(82386)		RADIATOR ASSEMBLY	EA	1	*	*	*			5	12
P--F--	4140-177-8612	578-123	(82386)		FAN ASSEMBLY	EA	1	*	*	*			5	13
X2-F	4320-456-1261	C4U9028	(72850)		PUMP,FUEL	EA	1						5	14

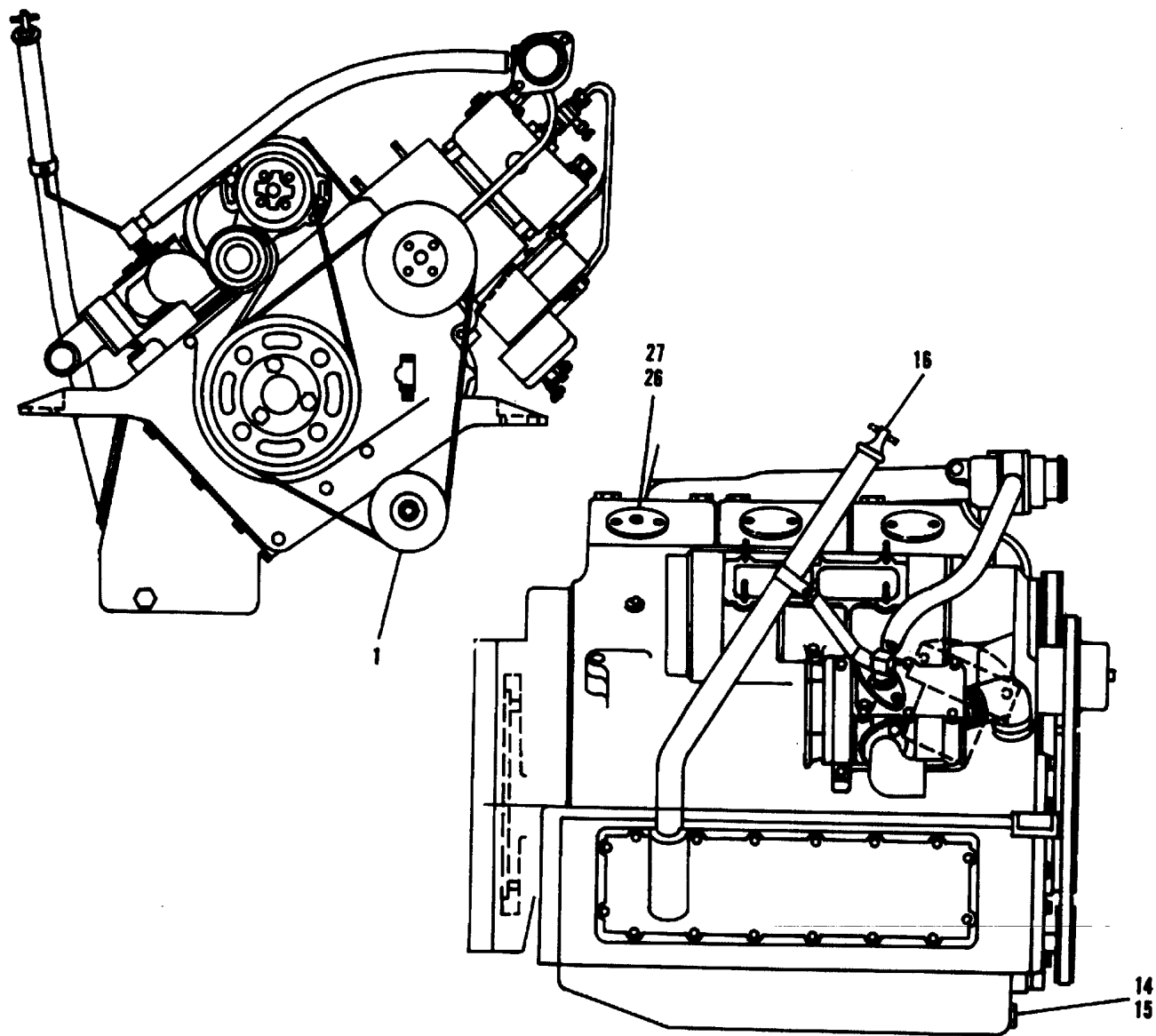


Figure 6. Engine Assembly (Sheet 1)

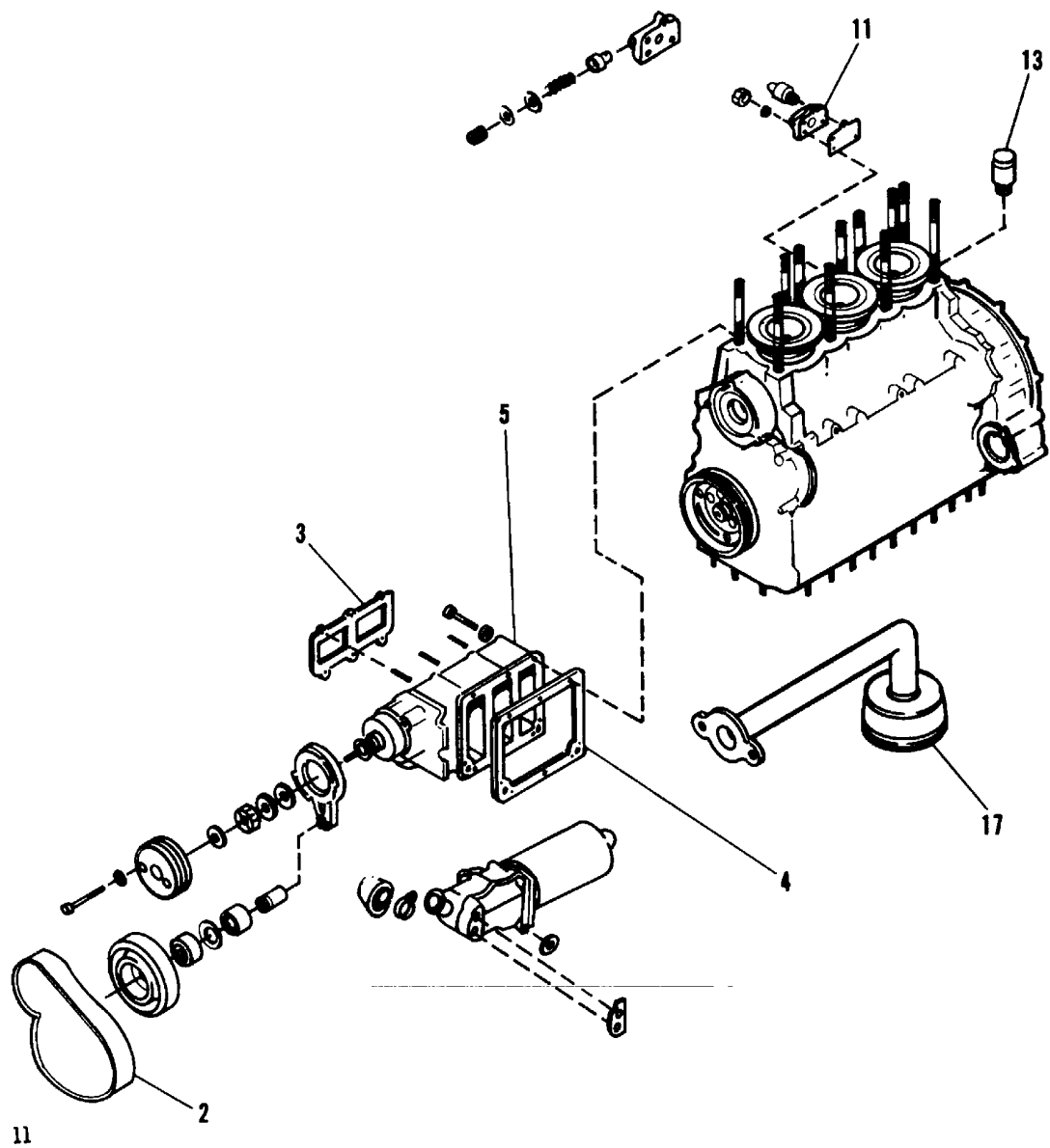


Figure 6. Engine Assembly (Sheet 2)

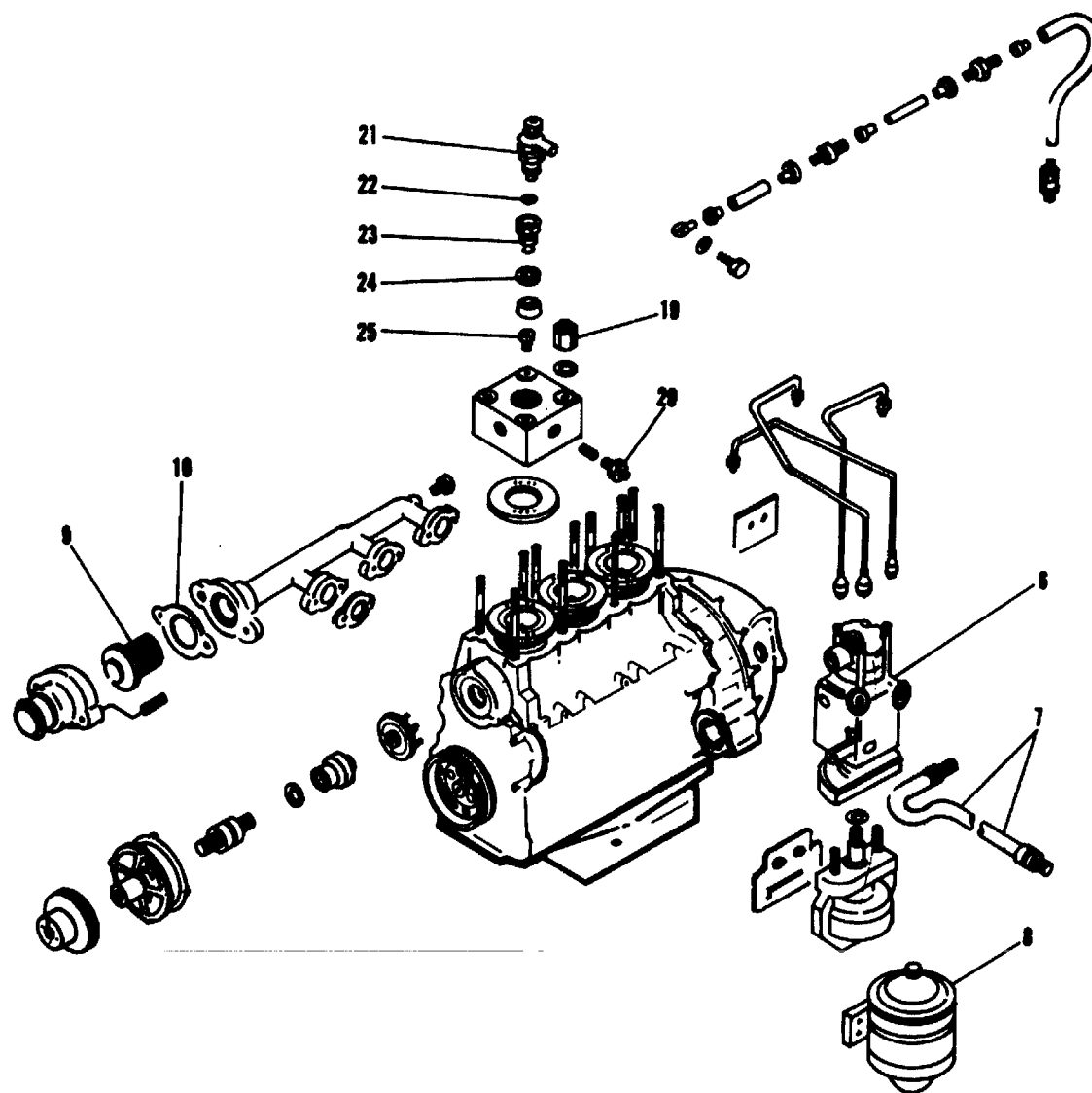


Figure 6. Engine Assembly (Sheet 3)

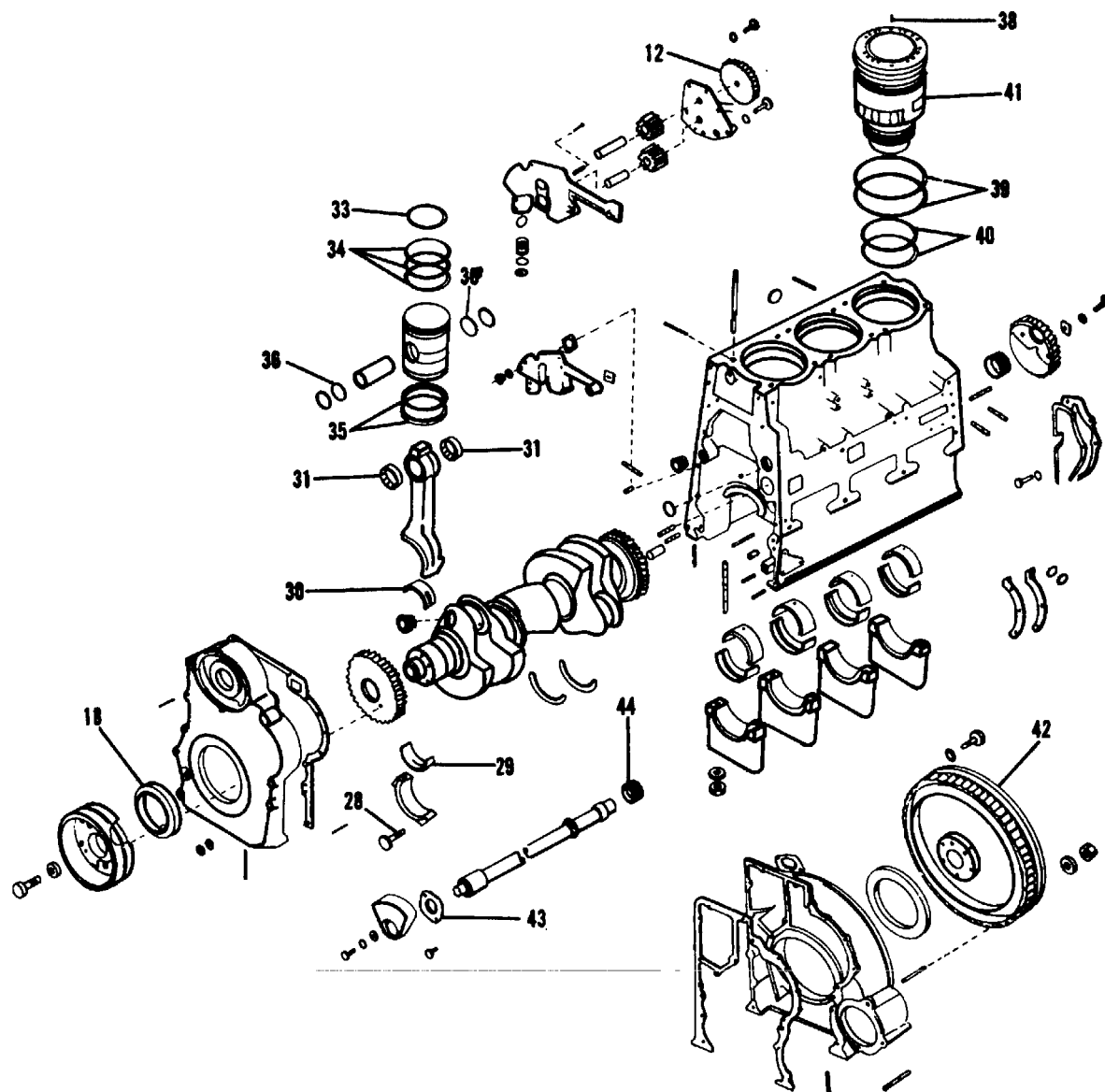


Figure 6. Engine Assembly (sheet 4)

(1) SMR CODE	(2) FEDERAL STOCK NUMBER	(3) DESCRIPTION REF. NUMBER & MFR CODE		USABLE ON CODE	(4) UNIT OF MEAS	(5) QTY INC IN UNIT	(6) 30 DAY DS/GS MAINT ALW			(7) 1-YR ALW PER EQUIP CNTGY	(8) DEPOT MAINT ALW PER 100 EQUIP	(9) ILLUSTRATION	
							(a)	(b)	(c)			(a) FIG. NO.	(b) ITEM NO.
							1-20	21-50	51-100				
GROUP 03 CONTINUED													
P--F--	4810-457-0164	LP3478	(61112)		EA	1	*	*	*		*	5	
P--F--	2910-420-4898	4479-926	(82386)		EA	1	*	*	*		*	5	15
P--F--	5310-483-8747	5661-5001	(82386)		EA	2	*E	*	*		*	5	
P--F--	2815-443-5537	479-5003	(82386)		EA	1	*	*	*		*	6	
X2-F--		G1162106	(15233)		EA	1						6	1
X1----		A1162106	(15233)			1						6	
P--F--	3110-012-0529	222035	(15233)		EA	1	*	*	*		*	6	
P--F--		1G2205603	(15233)		EA	1						6	
P--F--	3030-962-2984	2221807	(15233)		EA	1	*	*	*		*	6	2
P--F--	2815-716-6576	2222205	(15233)		EA	1	*	*	*		*	6	3
P--F--	2815-836-4647	C22-222-01	(15233)		EA	1	*	*	*		*	6	4
X2-F		A2205603	(15233)		EA	1						6	
X2-P	2990-827-0029	2215603	(15233)		EA	1						6	5
P--H--	2815-454-7980	2212604	(15233)		EA	2	*	*	*		*	6	
P--H--	3110-455-2699	2220307	(15233)		EA	1	*	*	*		*	6	
P--H--	2805-404-7372	2212102	(15233)		EA	1	*	*	*		*	6	
P--H--	5330-443-6109	2212606	(15233)		EA	2	*	*	*		*	6	
P--H--	2815-456-1269	2226702	(15233)		EA	2	*	*	*		*	6	
P--H--	3110-455-2708	2220306	(15233)		EA	4	**	*	*		*	6	
P--H--	5330-255-0115	2216803	(15233)		EA	4	*	*	*		*	6	
P--H--	2815-454-7978	2226701	(15233)		EA	2	**	*	*		*	6	
X1		2215504	(15233)				2						6
P--F--	2910-457-0171	G1605732	(15233)		EA	1	*	*	*		*	6	6
P--F--	2910-936-0479	A1523009	(15233)		EA	1	*	*	*		*	6	7
		6656489	(81321)			1						6	8
P--F--	5330-805-8852	19954-5	(81321)		EA	1	*	*	*		*	6	
P--F--	2910-287-1930	6663116	(81321)		EA	1	*	*	*		*	6	
P--F--	2910-936-0480	A1523010	(15233)		EA	1	*	*	*		*	6	
P--F--	6620-997-0927	1114007	(15233)		EA	1	*	*	*		*	6	9
P--F--	5330-455-2715	1122205	(15233)		EA	1	*	*	*		*	6	10
P--F--	2930-962-2997	1123320	(15233)		EA	1	*	*	*		*	6	11
		0301-5018	(15233)			1						6	
P--F--	2940-962-2960	0822218	(15233)		EA	1	*	*	*		*	6	
P--F--	2940-962-2961	0822701	(15233)		EA	1	*	*	*		*	6	
P--F--	2940-580-6283	MS35802-3	(96906)		EA	1	*	*	*		*	6	
P--F--	5330-456-6973	0822702	(15233)		EA	1	*	*	*		*	6	
P--F--	6720-484-0555	A1316-12-0520	(00624)		EA	2	*	*	*		*	6	
P--D--	2815-454-7974	A0805706	(15233)		EA	1					*	6	
X1----		0817304	(15233)			1						6	12
X2-F--		0802518	(15233)		EA	1						6	13
P--F--	5365-403-7816	0824901	(15233)		EA	1	*	*	*		*	6	14
P--F--	5330-456-6970	0017001	(15233)		EA	1	*	*	*		*	6	15
X2-F--		0213011	(15233)		EA	1						6	16
X2-D--		0804229	(15233)		EA	1						6	17

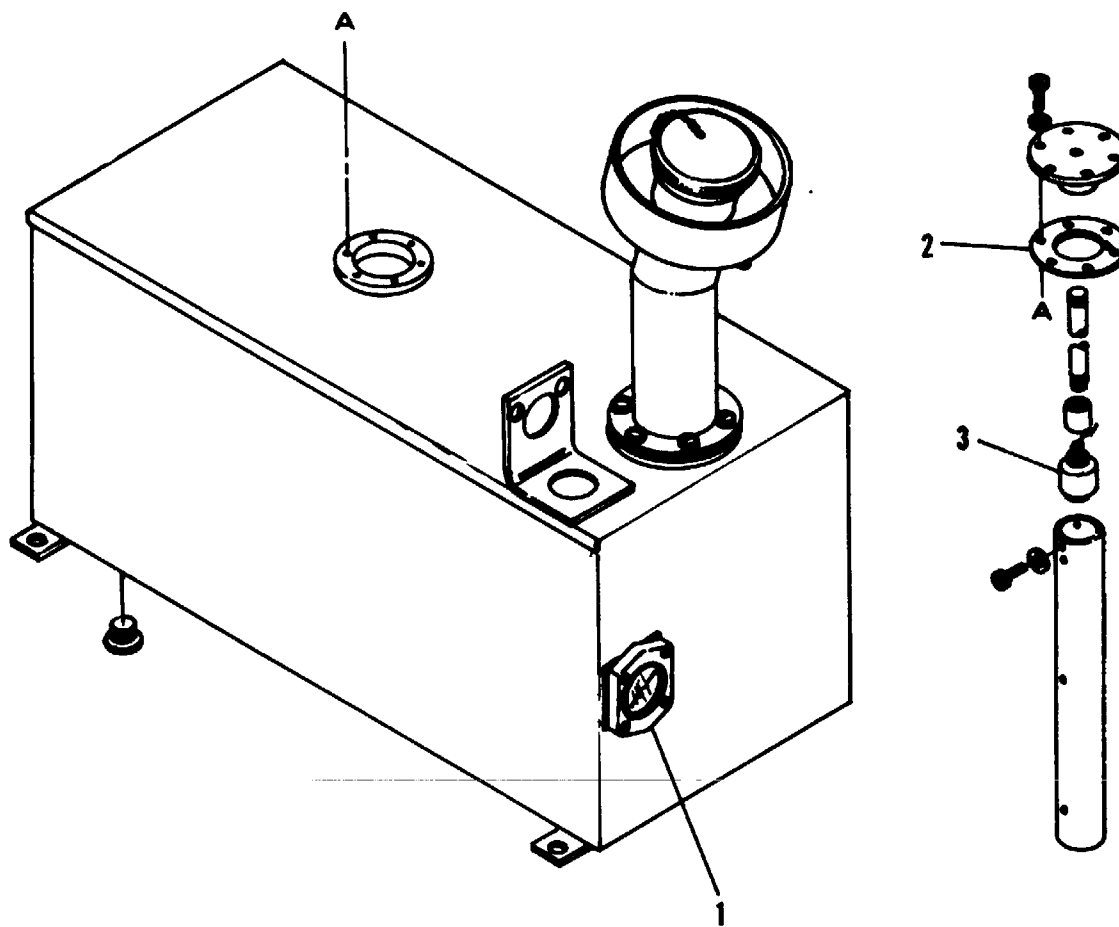


Figure 7. Fuel Tank

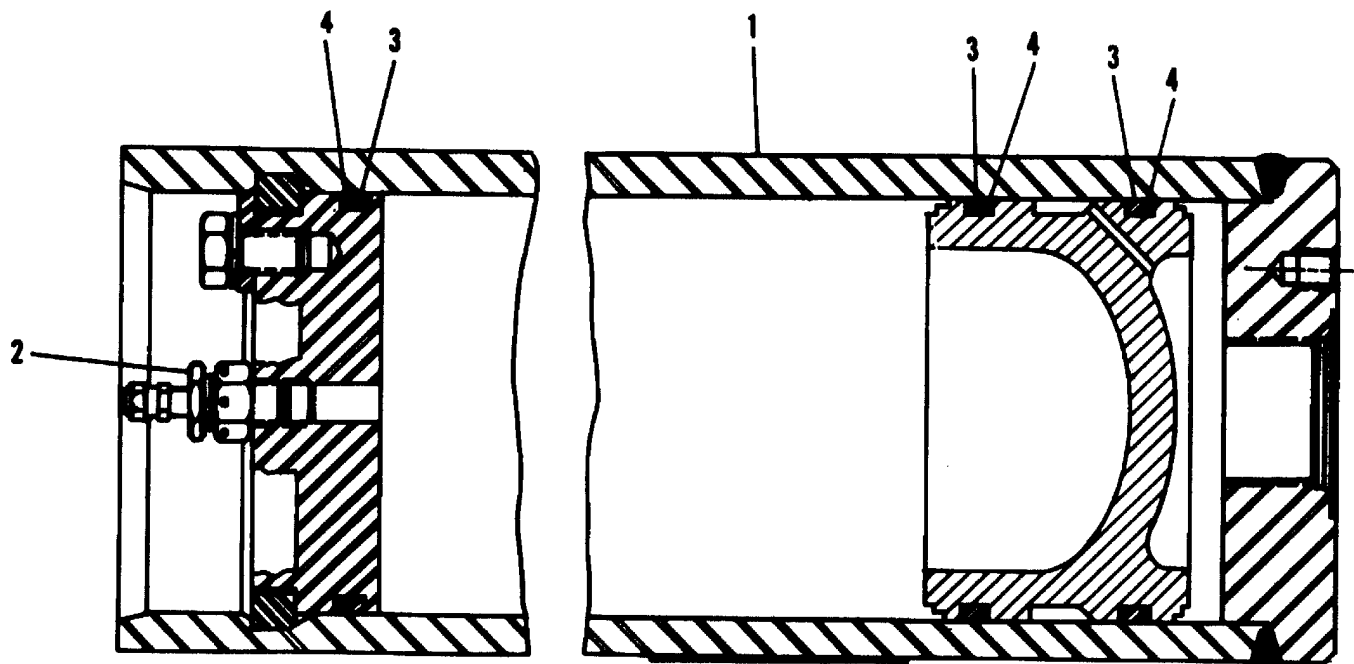


Figure 8. Accumulator

(1) SMR CODE	(2) FEDERAL STOCK NUMBER	(3) DESCRIPTION REF. NUMBER & MFR CODE		USABLE ON CODE	(4) UNIT OF MEAS	(5) QTY INC IN UNIT	(6) 30 DAY DS/GS MAINT ALW			(7) 1-YR ALW PER EQUIP CNTGY	(8) DEPOT MAINT ALW PER 100 EQUIP	(9) ILLUSTRATION	
							(a) 1-20	(b) 21-50	(c) 51-100			(a) FIG. NO.	(b) ITEM NO.
GROUP 03 CONTINUED													
P--D--	5330-998-3199	0516804	(15233)		EA	1					*	6	18
P--F--	2930-456-5687	A1105706	(15233)		EA	1	*	*	*		*	6	
P--H--	5310-458-2329	0126301	(15233)		EA	12	*		*		*	6	19
P--H--	2910-725-3015	1519601	(15233)		EA	1	*	*	*		*	6	20
P--H--	2815-716-6505	1526001	(15233)		EA	1	*	*	*		*	6	21
P--H--	5340-461-5799	326602	(15238)		EA	1	*	*	*		*	6	22
P--H--	2815-454-7953	0311711	(15233)		EA	1	*	*	*		*	6	23
P--H--	5310-998-3269	0322602	(15233)		EA	1	*	*	*		*	6	24
P--H--	2815-454-7955	0311709	(15233)		EA	1	*	*	*		*	6	25
X2-H--		0311614	(15233)		EA	3						6	26
P--H--	2815-853-6082	0322402	(15233)		EA	3	*	*			*	6	27
X2-D--		A0301106	(15233)		EA	3						6	
X1----		0325201	(15233)			2						6	28
P--D--	3120-456-6936	0320202	(15233)		EA	1					*	6	29
							half						
P--D--	3120-456-6939	0320201	(15233)		EA	1					*	6	30
							half						
P--D--	3120-456-6942	0320101	(15233)		EA	2					*	6	31
X2-D		A0301205	(15233)		EA	3						6	32
P--D--	2815-454-7957	0311416	(15233)		EA	1					*	6	33
P--D--	2815-725-1167	0311415	(15233)		EA	3					*	6	34
P--D--	2815-455-5606	0311414	(15233)		EA	2					*	6	35
X2-D	2815-454-7797	0316402	(15233)		EA	2						6	36
P--D--	2815-454-7794	0311301	(15233)		EA	1					*	6	37
X2-D		A0301001	(15233)		EA	3						6	
X1		0024709	(15233)			2						6	38
P--D--	5330-456-6968	0317006	(15233)		EA	2					*	6	39
P--D--	5330-456-6969	0317005	(15233)		EA	2					*	6	40
X1		0311001	(15233)			1						6	41
X2-D		A0500813	(15233)		EA	1						6	42
P--D--	3120-456-6932	0520703	(15233)		EA	2					*	6	43
P--D--	3120-456-6934	0520201	(15233)		EA	8					*	6	44
P--F--	3030-725-3012	1121810	(15233)		EA	1	*	*	*		*	6	
P--F--	6680-457-8609	C614-1066	(82386)			1						7	
P--F--	5330-461-5833	336-019	(82386)		EA	1	*	*	*		*	7	1
P--F--	2910-246-3956	C511-2762	(82386)		EA	1	*	*	*		*	7	2
P--F--		546-006	(82386)		EA	1	*	*	*		*	7	3
GROUP 04 HYDRAULIC SYSTEM													
P--F--	1650-229-6699	ACC20A211	(01843)		EA	1	*	*	*		*	8	1

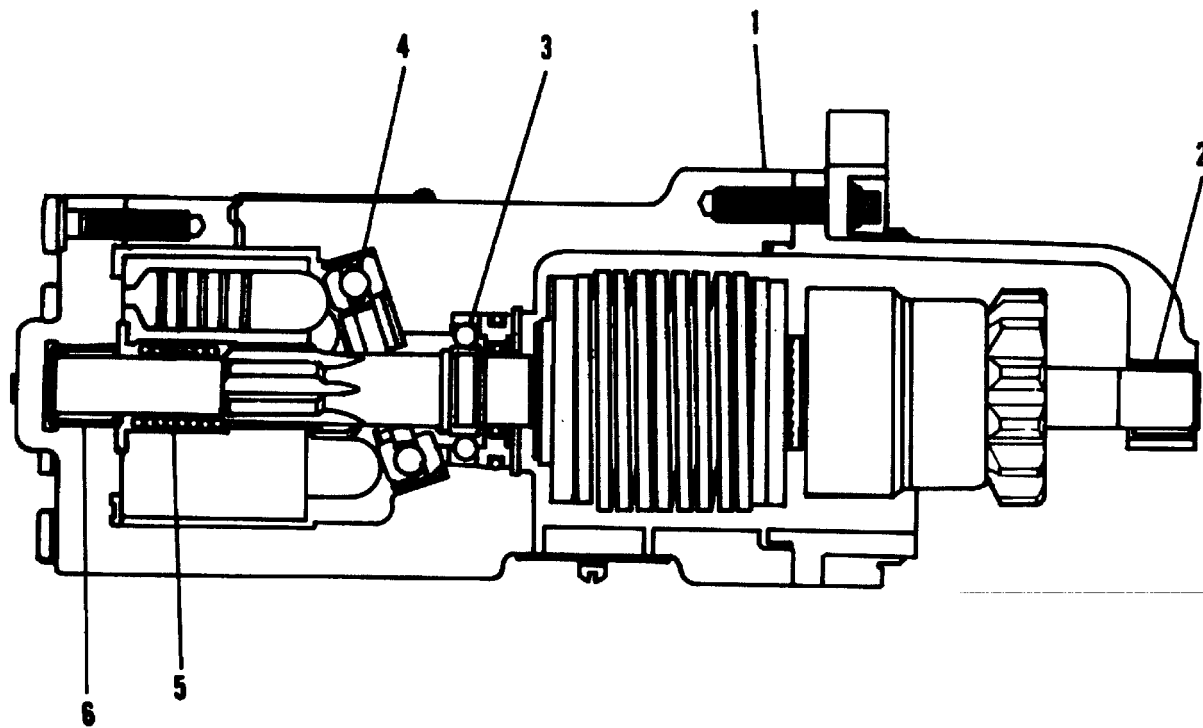


Figure 9. Starter, Engine

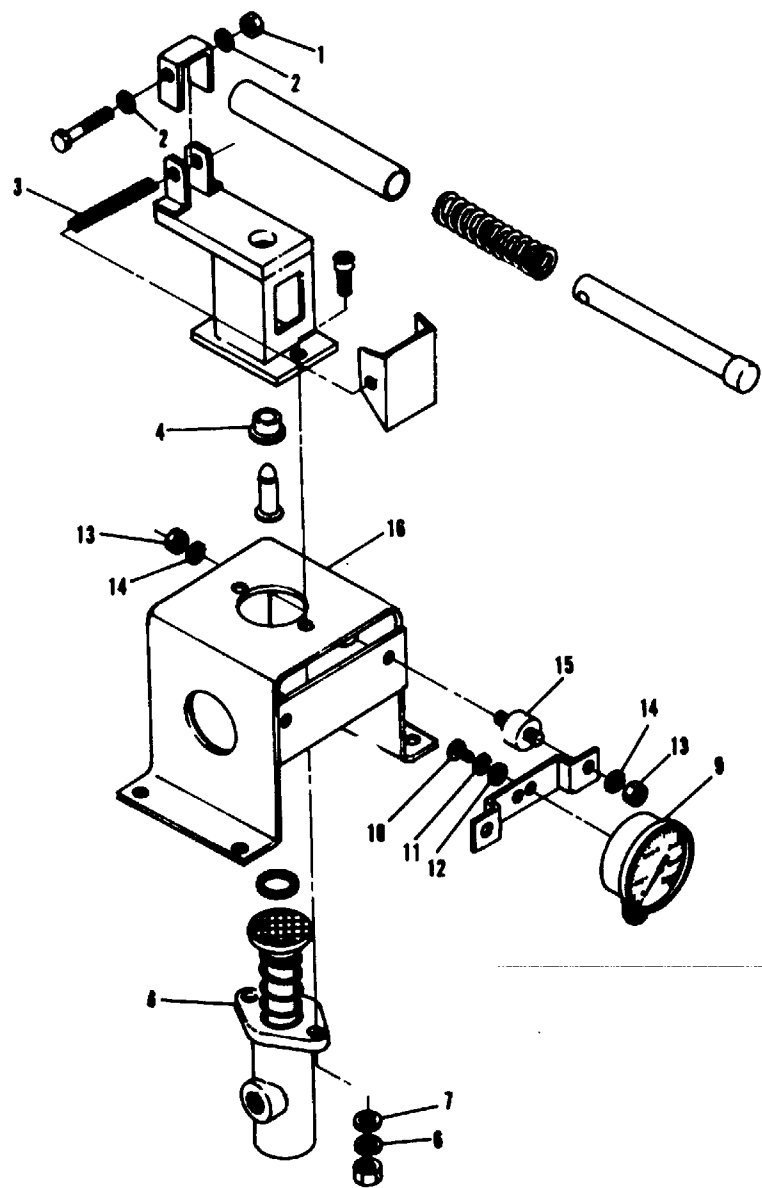


Figure 10. Start Valve

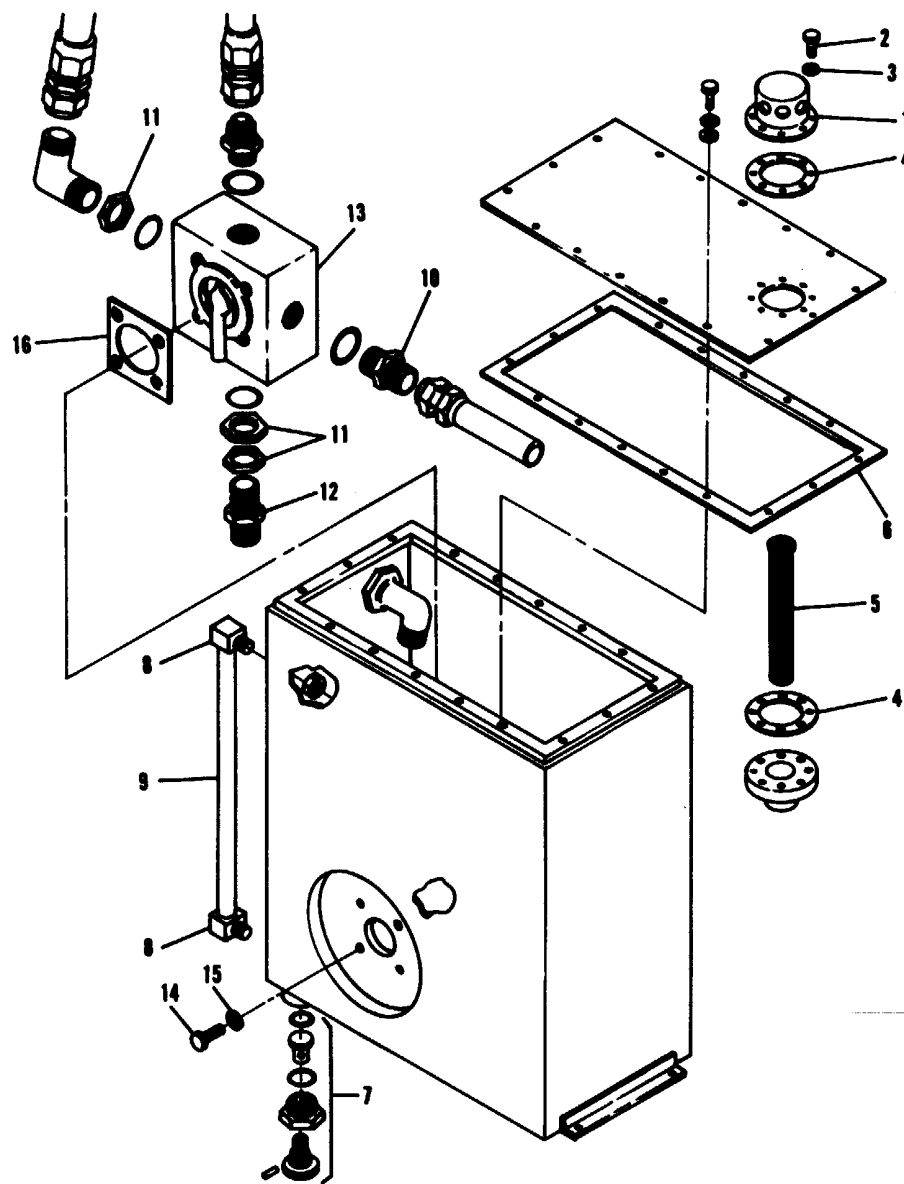


Figure 11. Hydraulic Tank

(1) SMR CODE	(2) FEDERAL STOCK NUMBER	(3) DESCRIPTION REF. NUMBER & MFR CODE		USABLE ON CODE	(4) UNIT OF MEAS	(5) QTY INC IN UNIT	(6) 30 DAY DS/GS MAINT ALW			(7) 1-YR ALW PER EQUIP CNTGY	(8) DEPOT MAINT ALW PER 100 EQUIP	(9) ILLUSTRATION	
							(a) 1-20	(b) 21-50	(c) 51-100			(a) FIG. NO.	(b) ITEM NO.
GROUP 04 CONTINUED													
P--F--	4820-960-3842	VA200932	(01843)	.VALVE, PNEUMATIC	EA	1	*	*	*		*	8	2
P--F--	5330-052-1849	GA1128-9	(01843)	.PACKING, PREFORMED	EA	3	*	*	*		*	8	3
P--F--	5330-829-0367	RG 100155	(01843)	.PACKNG,PREFORMED	EA	3	*	*	*		*	8	4
P--F--	2990-018-6881	CH0308068A	(01843)	STARTER,ENGINE, HYRAULIC	EA	1	*	*	*		*	9	1
P--H--	3110-227-3430	GB1012XOH	(60380)	.BBARING,BALL, NEEDLE	EA	1	*	*	*		*	9	2
P--H--	5330-440-4900	GA100088	(01843)	.PACKING,PREFORMED.....	EA	1	*	*	*		*	9	
P--H--	5330-440-4901	GAIO000104	(01843)	.PACKING,PREFORMED.....	EA	1	*	*	*		*	9	
P--H--	3110-825-5460	BB100083	(01843)	.BEARING,BALL, ANNULAR	EA	1	*	*	*		*	9	3
P--H--	3110-828-3668	33202169	(01843)	.IRARTNG,BALL,THRUST.....	EA	1	*	*	*		*	9	4
X2-H	2990-507-8286	SP202166	(01843)	.SPRING,HELICAL, COMPRESSION	EA	1	*	*	*		*	9	5
P--H--	3110-902-2704	GB810mH	(60380)	.BEARING,ROLLER,NEEDLE	EA	1	*	*	*		*	9	6
C614-1057 (82386) START VALVE MOUNTING													
P--F--	5310-877-5796	M21044N4	(96906)	.NUT,SELF-LOCKING, HEXAGON	EA	1	*	*	*		*	10	
P--F--	5310-809-3078	MS27183-11	(96906)	.WASHER,FLAT	EA	2	*	*	*		*	10	1
P--F--	5360-134-3442	711-178	(82386)	.SPRING, EXTENSION	EA	1	*	*	*		*	10	2
P--F--	3120-988-8020	FF707-5	(70477)	.BEARING,SLEEVE	EA	1	*	*	*		*	10	3
P--F--	5310-880-7744	S51967-5	(96906)	.NUT,PLAIN,HEXAGON.....	EA	2	*	*	*		*	10	4
P--F--	5310-407-9566	HS35338-45	(96906)	.WASHER,LOCK	EA	2	*	*	*		*	10	5
P--F--	5310-081-4219	MS15795-212	(96906)	.WASHER,FLAT	EA	2	*	*	*		*	10	6
P--F--	4820-819-7699	VA202180	(01843)	.VALVE ASSEMBLY	EA	1	*	*	*		*	10	7
P--F--	6685-045-3211	GG200656	(01843)	.GAGE ,PRESSURE,DIAL	EA	1	*	*	*		*	10	8
P--F--	5305-984-4988	MS35206-228	(96906)	.SCREW,MACHINE	EA	2	*	*	*		*	10	9
P--F--	5310-045-4007	MS35338-41	(96906)	.WASHER,LOCK	EA	2	*	*	*		*	10	10
P--F--	5310-167-0816	MS15795-206	(96906)	.WASHER,FLAT	EA	2	*	*	*		*	10	11
P--F--	5310-761-6882	MS51967-2	(96906)	.NUT ,PLAIN,HEXAGON.....	EA	2	*	*	*		*	10	12
P--F--	5310-809-3078	MS27183-11	(96906)	.WASHER,FLAT	EA	4	*	*	*		*	10	13
P--F--	5340-461-5803	561-137	(82386)	.BUMPER, RUBBER	EA	2	*	*	*		*	10	14
P--H--	4820-456-5596	C614-1056	(82386)	.SUPPORT,VALVE	EA	1	*	*	*		*	10	15
C614-1009 (82386) HYDRAULIC TANK ASSEMBLY													
P--F--	2910-847-6746	1990A	(90005)	.CAP,FUEL TANK	EA	1	*	*	*		*	11	
P--F--	5305-984-6193	MS35206-245	(96906)	.SCREW,MACHINE	EA	8	*	*	*		*	11	1
P--F--	5310-559-0070	MS35333-38	(96906)	.WASHER,LOCK	EA	8	*	*	*		*	11	2
P--F--	5330-456-2567	A840-6046	(82386)	.GASKET	EA	2	*	*	*		*	11	3
X2-F	2910-456-1501	324-006	(82386)	.ELEMENT,STRAINER	EA	1	*	*	*		*	11	4
P--F--	5330-456-2568	C614-6038	(82386)	.GASKET	EA	1	*	*	*		*	11	5
X2-F	4920-651-5578	2-1668	(82386)	.VALVE ASSEMBLY,DRAIN	EA	1	*	*	*		*	11	6
P--F--	5310-420-5993	108-901	(82386)	.NUT,SPECIAL	EA	2	*	*	*		*	11	7
P--F--	5210-178-6770	108-010	(82386)	.CAGE,LEVEL, sight	EA	1	*	*	*		*	11	8

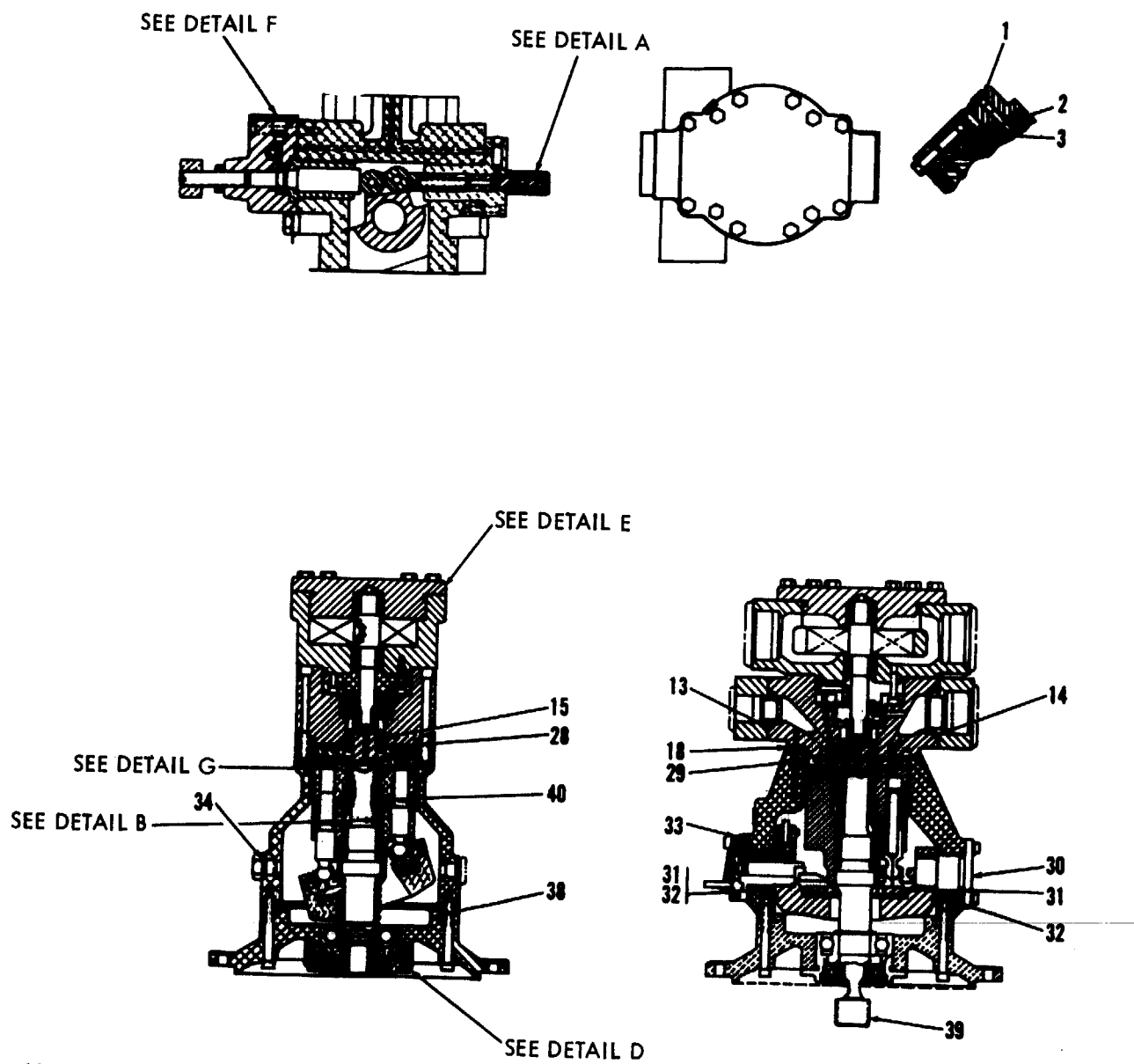


Figure 12. High Pressure Pump (Sheet 1)

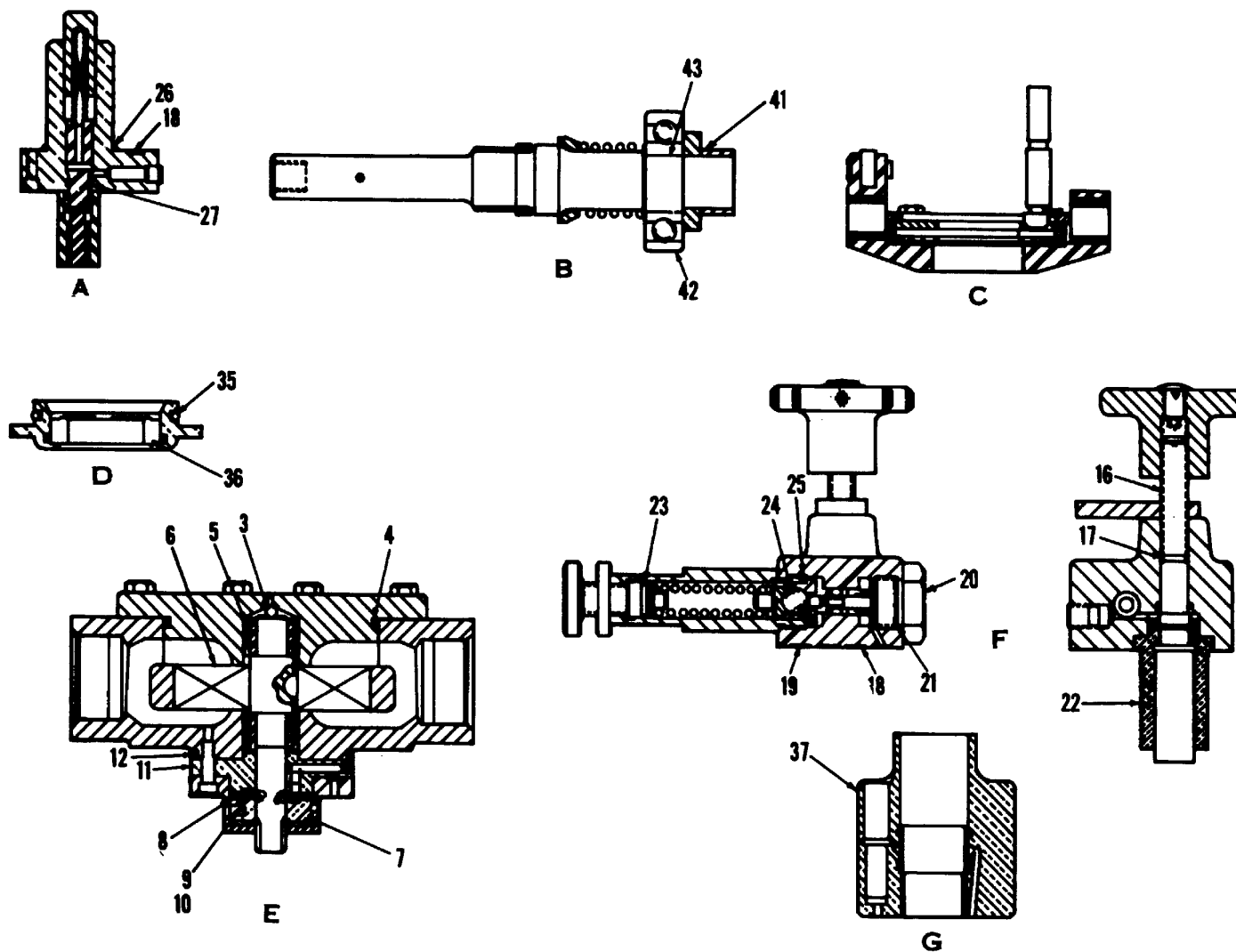


Figure 12. High Pressure Pump (Sheet 2)

(1) SMR CODE	(2) FEDERAL STOCK NUMBER	(3) DESCRIPTION REF. NUMBER & MFR CODE		USABLE ON CODE	(4) UNIT OF MEAS	(5) QTY INC IN UNIT	(6) 30 DAY DS/GS MAINT ALW			(7) 1-YR ALW PER EQUIP CNTGY	(8) DEPOT MAINT ALW PER 100 EQUIP	(9) ILLUSTRATION		
							(a) 1-20	(b) 21-50	(c) 51-100			(a) FIG. NO.	(b) ITEM NO.	
GROUP 04 CONTINUED														
P--F--	4730-852-1741	MS24392D24	(96906)		.NIPPLE,TUBE	EA	2	*	*	*		*	11	10
P--F--	5310-208-4134	MS24400D24	(96906)		.NUT, PLAIN,HEXAGON.....	EA	3	*	*	*		*	11	11
P--F--	4730-277-6423	AN832-24D	(88044)		.NIPPLE,TUB	EA	1	*	*	*		*	11	12
P--F--	4820-105-0212	2-1264-3	(86768)		.VALVE,SELECTOR	EA	1	*	*	*		*	11	13
X2-F	5306-937-9348	8023-082	(82386)		.BOLT,SPECIAL	EA	4						11	14
P--F--	5330-584-1840	MS28775-014	(96906)		.PACKING,PREFORMED	EA	4	*	*	*		*	11	15
P--F--	5330-456-2566	A840-6039	(82386)		.GASKET	EA	1	*	*	*		*	11	16
P--F--	2915-420-0955	303-068	(82386)		.PUMP,HIGH PRESSURE	EA	1	*	*	*		*	12	
P--D--	5330-125-7662	408612	(12027)		.PACKING,PREFORMED	EA	1					*	12	1
P--D--	4320-863-2428	408001	(77521)		.SPRING	EA	1					*	12	2
P--D--	3110-100-6151	MS19059-49	(96906)		.BALL,BEARING	EA	1					*	12	3
P--D--	4920-106-3070	703037	(00863)		.PUMP AND CAPSULE ASSEMBLY	EA	1					*	12	
P--D--	5330-456-2553	407590	(12027)		.PACKING,PREFORMED	EA	1					*	12	4
P--D--	3110-100-6151	MS19059-49	(96906)		.BALL,BEARING	EA	1					*	12	3
P--D--	3110-157-0527	407767	(12027)		.BEARING,BALL,ANNULAR	EA	2					*	12	5
P--D--	4320-934-9510	00862	(12027)		.ROTOR,ELEMENT	EA	1					*	12	6
P--D--	4920-734-0735	204015	(77521)		.PLATE,PUMP	EA	1					*	12	7
P--D--	4920-735-5030	353036	(77521)		.RING,eccentric	EA	1					*	12	8
P--D--	4920-740-7343	408018	(77521)		.ELEMENT,rotor	EA	1					*	12	9
P--D--	5315-941-6406	353494	(12027)		.PIN,STRAIGHT,HEADLESS	EA	1					*	12	10
X2-D--	4320-824-1189	204083	(77521)		.CAP,HYDRAULIC PUMP	EA	1					*	12	11
P--D--	5330-828-1930	402200	(77521)		.PACKING,PREFORMED	EA	1					*	12	12
P--D--	5330-070-4126	401269	(12027)		.PACKING,PREFORMED	EA	1					*	12	13
P--D--	5330-125-7664	401284	(12027)		.PACKING, PRFORMED	EA	1					*	12	14
P--D--	3110-461-3160	407757	(12027)		.BEARING, NEEDLE	EA	1					*	12	15
P--D--	4310-456-1267	353239	(12027)		.ROD,ADJUSTING	EA	1					*	12	16
P--D--	5330-843-8783	404547	(77521)		.PACKING,PREFOIMED	EA	1					*	12	17
P--D--	4810-914-0795	401273	(77521)		.PACKING,VALVE	EA	2					*	12	18
P--D--	5330-454-0531	402664	(12027)		.PACKING, PRFORMED	EA	2					*	12	19
P--D--	4730-097-6849	353245	(12027)		.PLUG,TUBE FITTING	EA	1					*	12	20
P--D--	5330-455-2713	405411	(12027)		.PACKING,PREFORMED	EA	2					*	12	21
P--D--	4320-938-3818	703311	(77521)		.SLEEVE AND SPOOL	EA	1					*	12	22
P--D--	5330-454-0528	405952	(12027)		.PACKING,PREFORMED	EA	1					*	12	23
P--D--	4320-456-1265	407897	(12027)		.BALL,STEEL	EA	1					*	12	24
P--D--	4320-938-3819	01517	(12027)		.RETAINER,PUMP,AXIAL	EA	1					*	12	25
P--D--	5330-461-3179	401278	(77521)		.PACKING, PREFORMED	EA	1					*	12	26
P--D--	4810-914-0795	401273	(77521)		.PACKING,VALVE	EA	1					*	12	18
P--D--	5330-118-1139	402791	(12027)		.PACKIING,PREFORMED	EA	1					*	12	
P--D--	5330-443-6093	404581	(12027)		.PACRING, PREFORMED	EA	1					*	12	27
P--D--	5330-118-1154	490111	(12027)		.PACKING,PREFORMED	EA	1					*	12	28
P--D--	4810-914-0795	401273	(77521)		.PACKING,VALVE	EA	1					*	12	18
P--D--	4320-938-3820	00631	(12027)		.PLATE,PORT,ROTATION	EA	1					*	12	29
X2-D	4920-734-0730	353013	(12027)		.TRUNNION,PUMP	EA	1					*	12	30
P--D--	5330-579-7914	MS28775-217	(96906)		.PACKING,PREFORMED	EA	1					*	12	31
P--D--		353015	(12027)		.WASHER,FLAT	EA	1					*	12	32

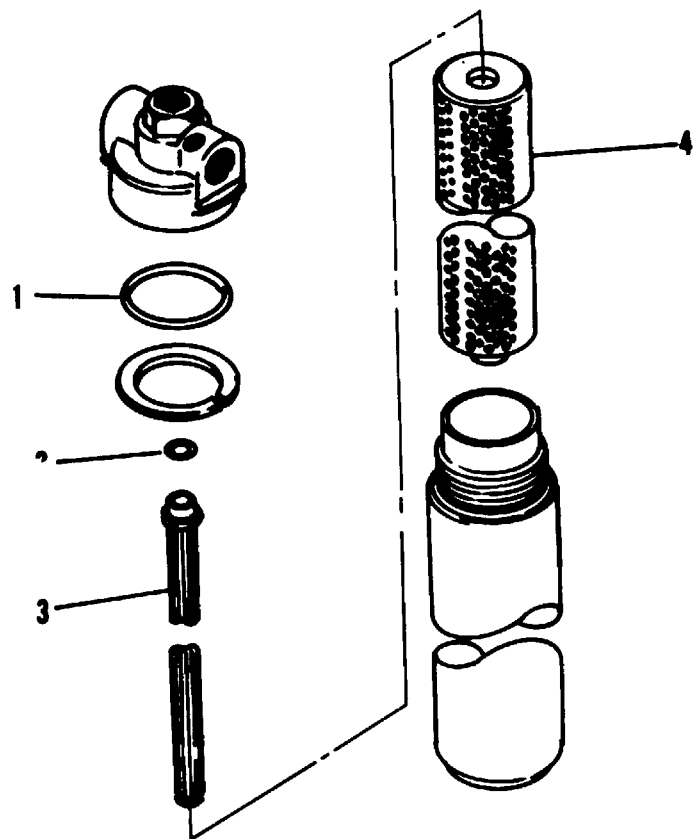


Figure 13. High Pressure Filter

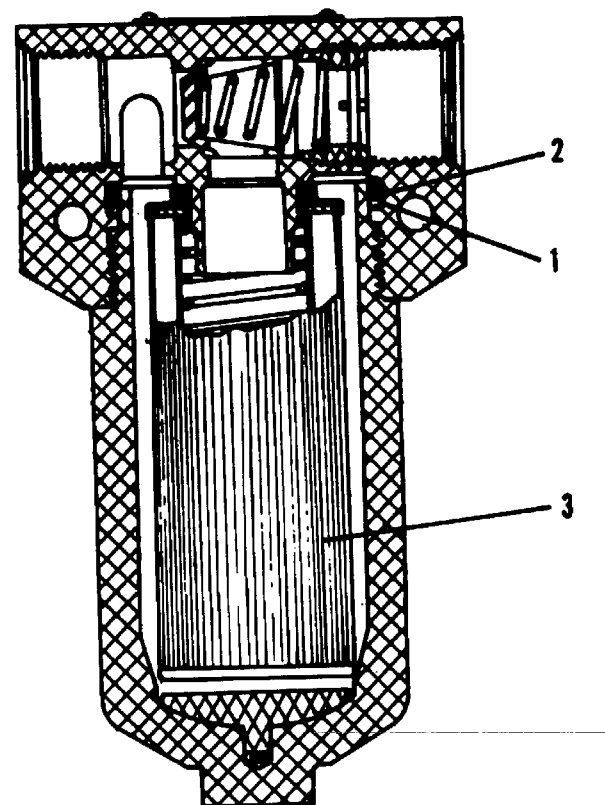


Figure 14. Starting Filter

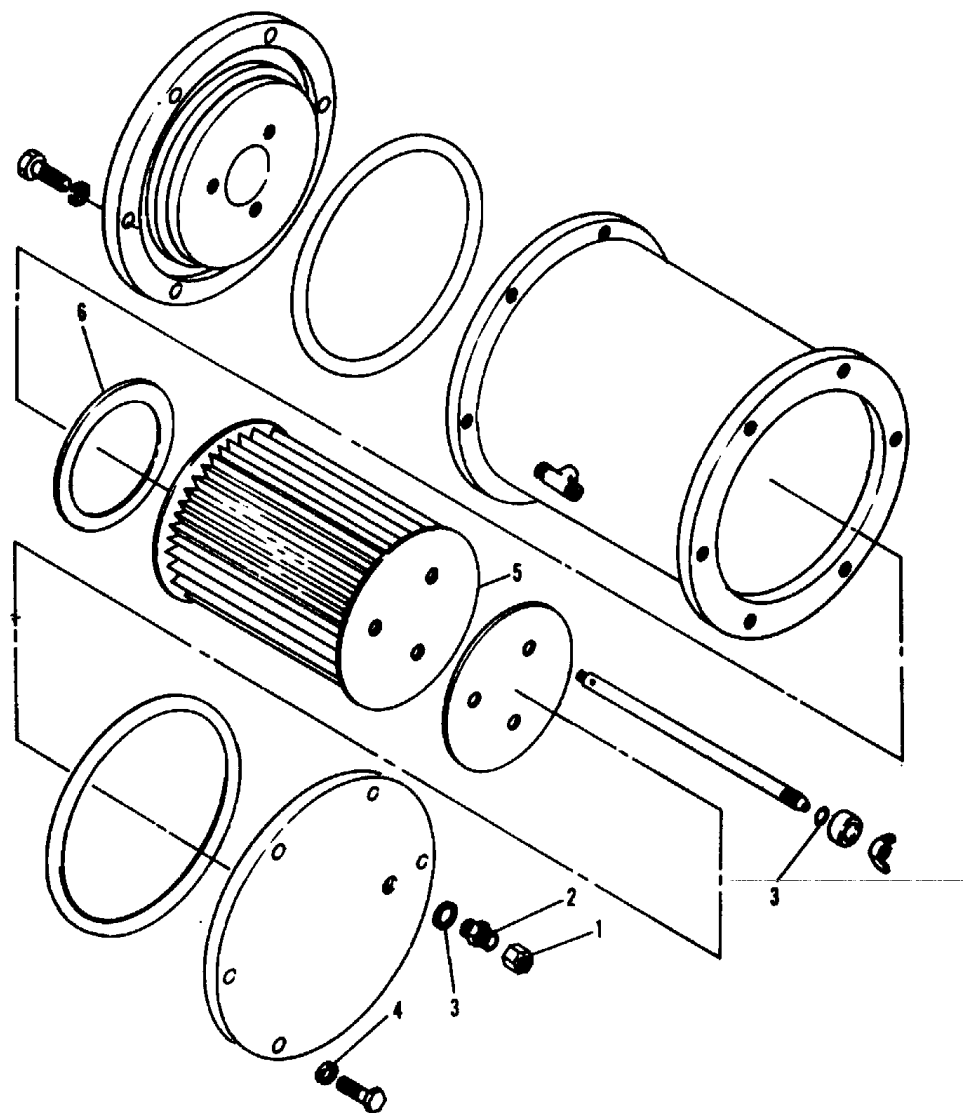


Figure 15. Low Pressure Filter

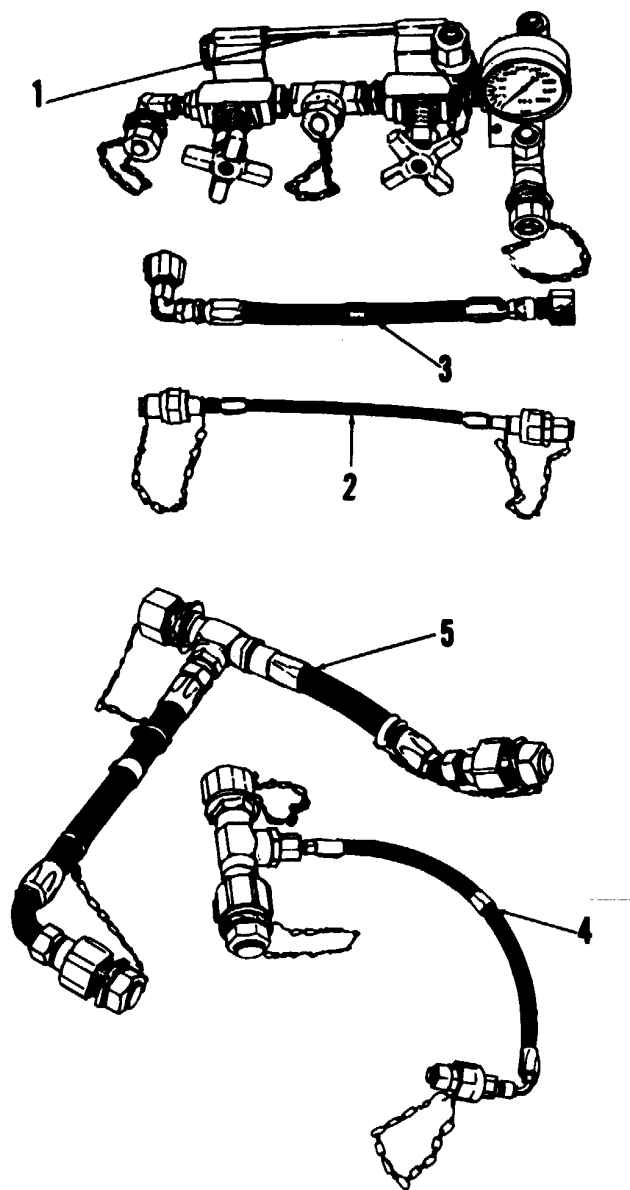


Figure 16. Flow Divider and Adapters

(1) SMR CODE	(2) FEDERAL STOCK NUMBER	(3) DESCRIPTION REF. NUMBER & MFR CODE		USABLE ON CODE	(4) UNIT OF MEAS	(5) QTY INC IN UNIT	(6) 30 DAY DS/GS MAINT ALW			(7) 1-YR ALW PER EQUIP CNTGY	(8) DEPOT MAINT ALW PER 100 EQUIP	(9) ILLUSTRATION	
							(a)	(b)	(c)			(a) FIG. NO.	(b) ITEM NO.
							1-20	21-50	51-100				
GROUP 04 CONTINUED													
P--D--	4320-938-3821	703009	(77521)		.TRUNNION ASSEMBLY,INDICATOR	EA	1				*	12	33
P--D--	5330-579-7914	MS28775-217	(96906)		.PACKING,PREFORMED	EA	1				*	12	31
P--D--	5310-461-3145	353015	(12027)		.WASHER,FLAT	EA	1				*	12	32
P--D--	5330-125-7661	405331	(12027)		.PACKING,PREFORMED	EA	1				*	12	34
P--D--	5330-124-5183	401280	(12027)		.PACKING,PREFORMED	EA	1				*	12	35
P--D--	4320-863-2418	408013	(12027)		.SEAL	EA	1				*	12	36
P--D--	2815-461-3739	703021	(12027)		.CYLINDER, ENGINE.....	EA	1				*	12	37
P--D--	5330-828-1925	401274	(77521)		.PACKING, PREFORMED	EA	1				*	12	38
P--D--	4920-734-0729	353005	(77521)		.SHAFT,DRIVE	EA	1				*	12	39
X2-D--		353094	(12027)		.SCREW,DRIVE,PUMP	EA	1					12	40
P--D--	5330-929-5058	002-99973	(12027)		.PACKING,PREFORMED	EA	1				*	12	41
P--D--	3110-293-9302	004-99974	(12027)		.BEARING, BALL	EA	1				*	12	42
P--D--	4320-456-1157	008-99975	(12027)		.BALL, STEEL,PUMP, HYDAULIC	EA	1				*	12	43
P--F--	4330-542-2060	AN6235-2A	(88044)		FILTER ELEMENT FLUID PRESSURE	EA	1	*	*	*	*	12	
					high pressure pump								
					FILTER,HIGH PRESSURE	EA	1					13	
P--F--	5330-579-7544	MS28775-243	(96906)		.PACKING,PREFORMED.....	EA	1	*	*	*	*	13	1
P--F--	5330-251-8839	MS28778-12	(96906)		.PACKING,PREFORMED	EA	1	*	*	*	*	13	2
P--F--	4330-897-2250	AC1600E121D40	(01414)		.FILTER ELEMENT,FLUID PRESSURE	EA	1	*	*	*	*	13	3
					secondary								
P--F--	4330-763-1268	AC4650RF2H	(01414)		FILTER ELEMENT,FLUID PRESSURE,	EA	1	*	*	*	*	13	4
					primary								
					FILTER,FLUID PRESSURE,starting		1					14	
					system								
P--F--	5330-186-4939	AN6244-6	(88044)		.WASHER, NONMETALLIC	EA	2	*	*	*	*	14	1
P--F--	5330-194-3713	AN6230-6	(88044)		.PACKING,PREFORMED	EA	1	*	*	*	*	14	2
P--F--	4330-277-3274	AM6235-4A	(88044)		.FILTER ELEMENT FLUID PRESSURE	EA	1	*	*	*	*	14	3
					FILTER,LOW PRESSURE	EA	1					15	
P--F--	4730-711-4411	AN929-4D	(88044)		.CAP ASSEMBLY	EA	1	*	*	*	*	15	1
P--F--	4730-925-4752	AN815-4D	(88044)		.NIPPLE, TUBE	EA	1	*	*	*	*	15	2
P--F--	5330-805-2966	MS28778-4	(96906)		.PACKING,PREFORMED	EA	2	*	*	*	*	15	3
P--F--	5310-407-9566	MS35338-45	(96906)		.WASHER, LOCK	EA	6	*	*	*	*	15	4
P--F--	4330-804-1541	AN6236-3	(880M)		.FILTER ELEMENT,FLUID PRESUURE	EA	1	*	*	*	*	15	5
P--F--	5330-196-6695	AN6238-1	(88044)		.WASHER,NONMETALLIC	EA	1	*	*	*	*	15	6
P--F--	4730-404-2817	C614-8018	(82386)		ADAPTER ASSEMBLY,FLOW DIVIDER	EA	1	*	*		*	16	1
X2-F--		C614-8020	(82386)		HOSE ASSEMBLY,FLOW DIVIDER	EA	1					16	2

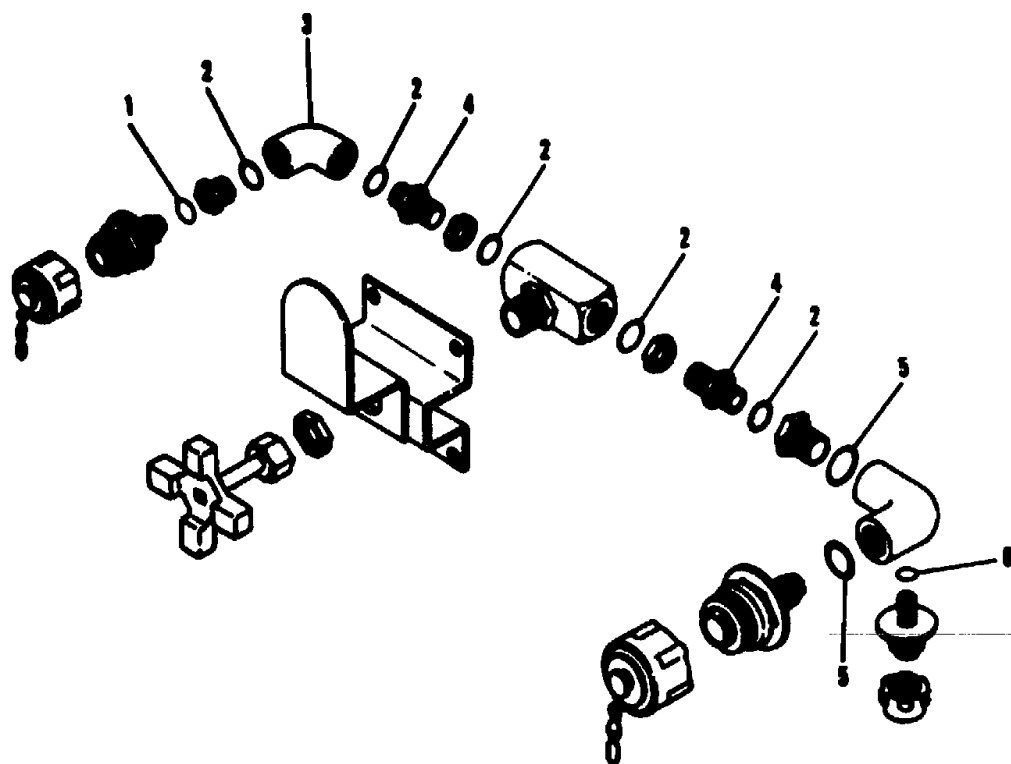


Figure 17. Manifold Assembly

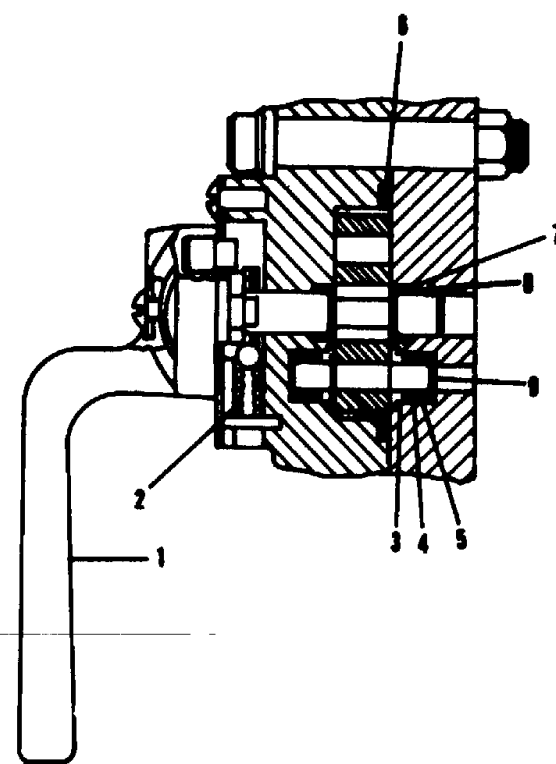


Figure 18. Valve, Linear

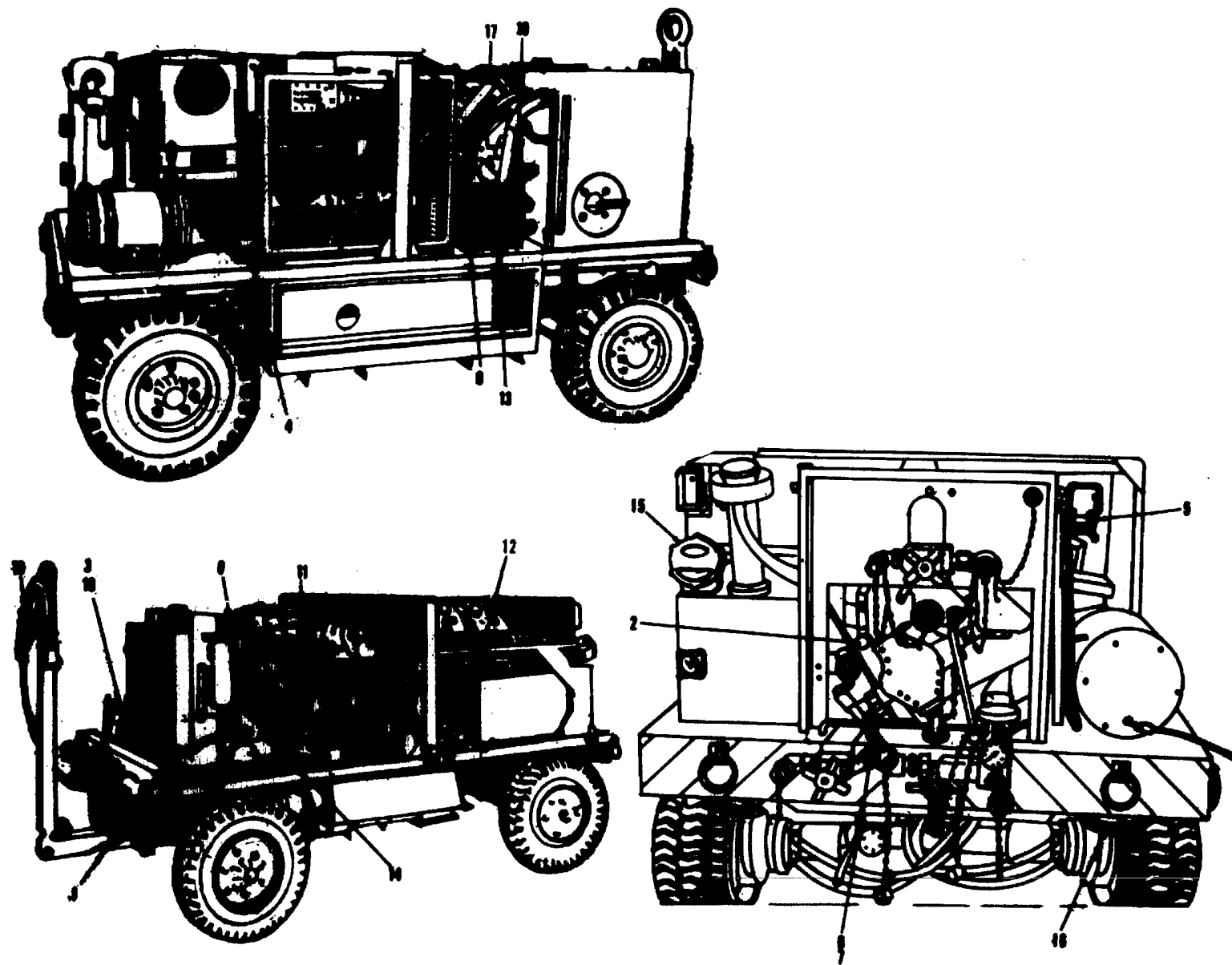


Figure 19. Miscellaneous Electrical Components

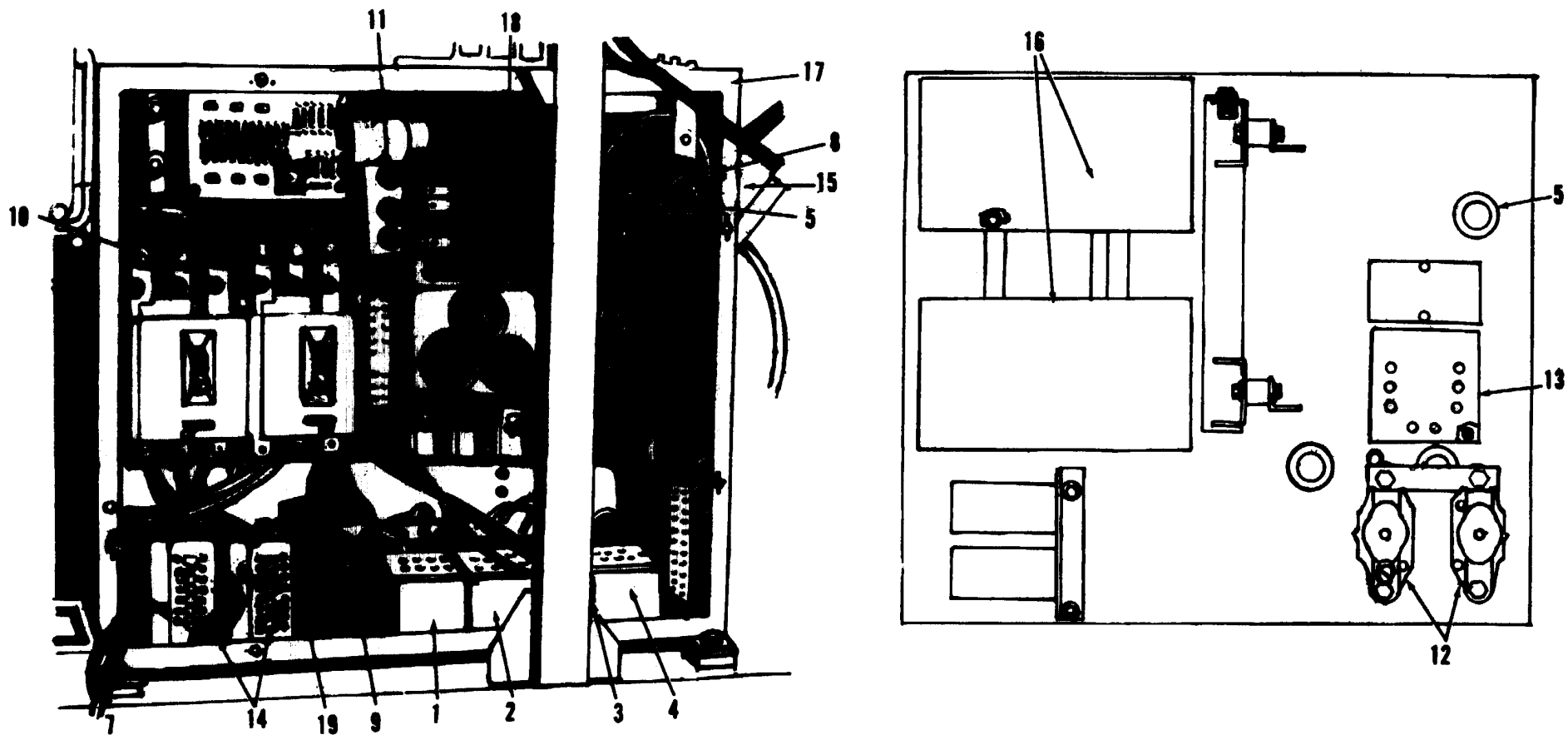


Figure 20. Electrical Box

(1) SMR CODE	(2) FEDERAL STOCK NUMBER	(3) DESCRIPTION REF. NUMBER & MFR CODE		USABLE ON CODE	(4) UNIT OF MEAS	(5) QTY INC IN UNIT	(6) 30 DAY DS/GS MAINT ALW			(7) 1-YR ALW PER EQUIP CNTGY	(8) DEPOT MAINT ALW PER 100 EQUIP	(9) ILLUSTRATION	
							(a)	(b)	(c)			(a) FIG. NO.	(b) ITEM NO.
							1-20	21-50	51-100				
GROUP 04 CONTINUED													
P--F--	4730-555-0896	155S5-16D	(00624)		EA	2	*	*	*		*	19	
P--F--	5340-631-0888	0155S9-16D	(00624)		EA	2	*	*	*		*	19	
P--F--	4720-805-2676	MS28741-8-3000	(96906)		EA	1	*	*	*		*	19	
P--F--	4730-554-7737	155S5-8D	(00624)		EA	2	*	*	*		*	19	
P--F--	4730-654-1521	155S9-8D	(00624)		EA	2	*	*	*		*	19	
P--F--	4720-461-3738	5507-5001	(82386)		EA	1	*	*	*		*	19	
P--F--	4730-554-7738	155S5-10D	(00624)		EA	2	*	*	*		*	19	
P--F--	5340-561-1545	155S9-12D	(00624)		EA	2	*	*	*		*	19	19
P--F--	4730-554-7737	155S5-8D	(00624)		EA	2	*	*	*		*	19	
P--F--	4730-889-2262	MS24397D151	(96906)		EA	1	*	*	*		*	19	
P--F--	5330-808-0794	MS28778-8	(96906)		EA	1	*	*	*		*	19	
P--F--	4320-675-6759	1000-3-4	(47296)		EA	1	*	*	*		*	19	11
P--F--	5330-582-2855	MS28775-113	(96906)		EA	2	*	*	*		*	19	
P--F--	5330-831-6561	6246-11	(47296)		EA	1	*	*	*		*	19	
P--F--	5330-828-3563	1000-25-8	(47296)		EA	1	*	*	*		*	19	
GROUP 05 AC GENERATING SYSTEM													
P--F--	5340-603-2149	561-117	(82386)		EA	4	*	*	*		*	19	
P--F--	6110-228-8829	8030-011	(82386)		EA	1	*	*	*		*	19	10
X1----		8018-027	(82386)		EA	1	*	*	*		*	19	
P--H--	3110-829-9910	55603X1E	(43334)		EA	1	*	*	*		*	19	
P--H--	5910-486-9133	679-341	(82386)		EA	2	*	*	*		*	19	
P--F--	6115-400-2755	506-504	(82386)		EA	1	*	*	*		*	19	
P--H--	5977-455-6278	3300A61A0008G01	(03510)		EA	1	*	*	*		*	19	
P--H--	5977-454-5438	3300A61A0008-004	(03510)		EA	1	*	*	*		*	19	
X2-D--	3110-114-5990	50BC02JDD	(03510)		EA	1	*	*	*		*	19	
P--F--		C614-5001	(82386)		EA	1	*	*	*		*	20	
P--F--	5945-421-0801	783-253	(82386)		EA	1	*	*	*		*	20	1
P--F--	5945-421-0802	783-254	(82386)		EA	1	*	*	*		*	20	2

(1) SMR CODE	(2) FEDERAL STOCK NUMBER	(3) DESCRIPTION REF. NUMBER & MFR CODE		USABLE ON CODE	(4) UNIT OF MEAS	(5) QTY INC IN UNIT	(6) 30 DAY DS/GS MAINT ALW			(7) 1-YR ALW PER EQUIP CNTGY	(8) DEPOT MAINT ALW PER 100 EQUIP	(9) ILLUSTRATION	
							(a) 1-20	(b) 21-50	(c) 51-100			(a) FIG. NO.	(b) ITEM NO.
GROUP 05 CONTINUED													
P--F--	5945-421-0803	783-255	(82386)		RELAY,ELECTRICAL,overfrequency	EA	1	*	*	*	*	20	3
P--F--	5945-134-7172	783-256	(82386)		.REILAY, ARMATURE,underfrequency	EA	1	*	*	*	*	20	4
P--F--	5325-174-9341	HS35489-52	(96906)		.GROMMET RUBBER	EA	3	*	*	*	*	20	5
X2-H--	5961-494-4723	C614-5020	(82386)		.DIODE PANEL ASSEMBLY	EA	1	*	*	*	*	20	6
P--H--	6625-760-6174	6500-080	(82386)		.TRANSDUCER ASSEMBLY	EA	1	*	*	*	*	20	7
P--F--	5961-494-4724	C614-5024	(82386)		.DIODE PANEL ASSMBLY	EA	1	*	*	*	*	20	8
P--F--	5945-681-9716	MS24568D1	(96906)		.RELAY,ARMATURE	EA	4	*	*	*	*	20	9
P--F--	5950-400-1464	778-310	(82386)		.TRANSFORMER,CURRENT	EA	3	*	*	*	*	20	10
P--F--	5920-783-7859	414015	(75915)		.FUSE,CARTRIDGE	EA	4	*	*	*	*	20	11
P--F--	5945-500-7195	MS24185D1	(96906)		.RELAY,SOLENOID	EA	2	*	*	*	*	20	12
P--F--	5945-660-9314	MS24168D2	(96906)		.RELAY	EA	1	*	*	*	*	20	13
P--F--	6645-228-8846	SS10223D1	(31117)		.TIMER	EA	1	*	*	*	*	20	14
GROUP 06 DC GENERATOR SYSTEM													
P--H--	6130-477-3931	8018-029	(82386)		RECTIFIER ASSEMBLY		1					20	15
P--H--	5325-276-6089	506-802	(82386)		.REGUTOR,DIODE	EA	1	*	*	*	*	20	
P--H--	5310-934-9751	MS35489-16	(96906)		.GROMMET,RUBBER	EA	1	*	*	*	*	20	
P--H--	6130-566-0347	MS35650-302	(96906)		.NUT,PLAIN,HEXAGON	EA	5	*	*	*	*	20	
P--F--		MS28132-1	(96906)		POWER SUPPLY,converter	EA	2	*	*	*	*	20	16
GROUP 07 ELECTRICAL CONTROL CIRCUITRY													
P--F--	2590-678-6140	MS51074-1	(96906)		HORN,ELECTRICAL	EA	1	*	*	*	*	20	17
P--F--	6110-400-2754	0506-5803-01	(82386)		REGULTOR, VOLTAGE	EA	1	*	*	*	*	20	18
P--H--	6130-134-5532	3300A85A9000-030	(03510)		.RECTIFIER,METALLIC	EA	3	*	*	*	*	20	
P--H--	5961-134-6082	3300A85A9002-027	(03510)		.SEMICONDUCTOR DEVICE	EA	1	*	*	*	*	20	
P--F--	1730-176-1099	6500-081	(82386)		CIRCUIT CARD ASSEMBLY,fault tracer module	EA	1	*	*	*	*	20	19
P--F--	5930-520-4760	2207-014	(82386)		SWITCH,SENSITIVE,propulsion	EA	1	*	*	*	*	19	12
					selector valve								
P--F--	6140-497-1697	AN3154-1A	(88044)		BATTERY,STORAGE	EA	1	*	*	*	*	19	13
P--F--	6680-455-5799	7077-0001	(82386)		GENERATOR.TACHOMETER	EA	1	*	*	*	*	19	14
P--O--	6220-669-5623	MS51329-1	(96906)		STOP LIGHT-TAILLIGHT,BLACKOUT	EA	1	*	*	*	*	19	15
					TAIL								

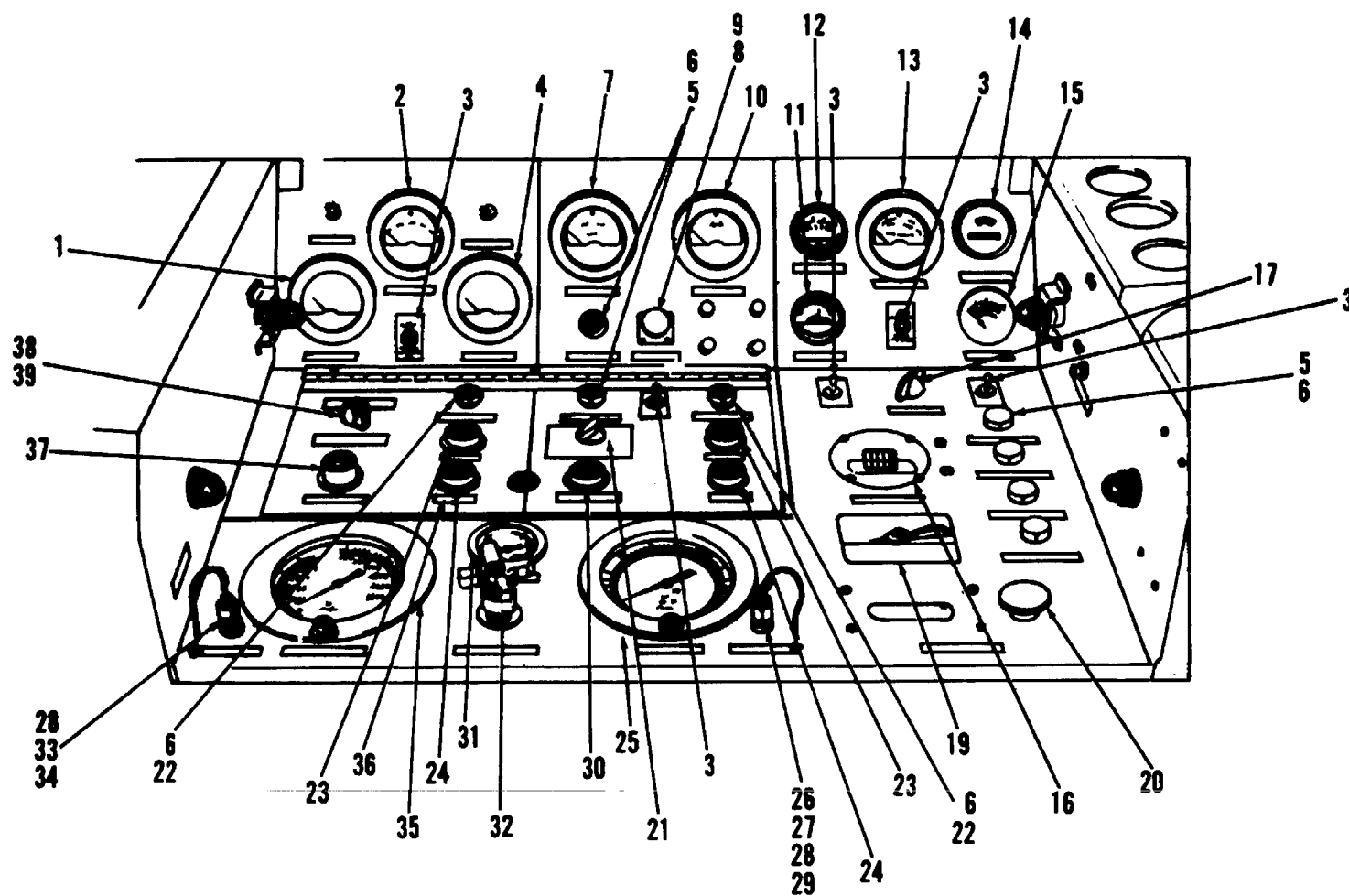


Figure 21. Control Panel

(1) SMR CODE	(2) FEDERAL STOCK NUMBER	(3) DESCRIPTION REF. NUMBER & MFR CODE		USABLE ON CODE	(4) UNIT OF MEAS	(5) QTY INC IN UNIT	(6) 30 DAY DS/GS MAINT ALW			(7) 1-YR ALW PER EQUIP CNTGY	(8) DEPOT MAINT ALW PER 100 EQUIP	(9) ILLUSTRATION	
							(a)	(b)	(c)			(a) FIG. NO.	(b) ITEM NO.
							1-20	21-50	51-100				
GROUP 07 CONTINUED													
P--F--	6220-176-5411	415-3	(71951)		LIGHT, MARKER, CLEARANCE	EA	2	*	*	*	*	19	16
P--F--	6240-496-9794	1251	(71951)		.LAMP, INCANDESCENT	EA	2	*	*	*	*	19	
X2-F	4810-457-0163	304-026	(82386)		SOLENOID VALVE	EA	1					19	17
GROUP 08 INSTRUMENT AND CONTROL PANEL													
P--F--	6625-811-1868	C614-3300	(82386)		CONTROL PANEL		1					21	
P--F--	6625-016-4519	MR36W150AFAAR	(81349)		.AMMETER	EA	1	*	*	*	*	21	1
P--F--	5930-683-1628	757-101	(82386)		.METER, ELECTRICAL FREQUENCY.....	EA	1	*	*	*	*	21	2
P--F--	6625-668-9747	MS24523-22	(96906)		.SWITCH, TOGGLE	EA	5	*	*	*	*	21	3
P--F--	6210-803-9882	MR36W150AFVVR	(81349)		.VOLTMETER	EA	1	*	*	*	*	21	4
P--F--	6240-155-8714	MS25331-9	(96906)		.LIGHT, INDICATOR	EA	2	*	*	*	*	21	5
P--F--	6625-958-2498	MS25231-313	(96906)		.LAMP INCANDESCENT	EA	4	*	*	*	*	21	6
P--O--	5935-581-4558	756-107	(82386)		.AMMETER	EA	1	*	*	*	*	21	7
P--F--	5935-149-3236	MS25043-16C	(96906)		.COVER, ELECTRICAL CONNECTOR	EA	1	*	*	*	*	21	8
P--F--	6625-857-4350	MS3102A1658S	(96906)		.CONNECTOR, RECEPTACLE, ELECTRICAL	EA	1	*	*	*	*	21	9
P--F--	6685-400-5292	756-110	(82386)		.VOLTMETER	EA	1	*	*	*	*	21	10
P--F--	6685-420-9232	SR21C	(03479)		.INDICATOR, WATER TEMPERATURE	EA	1	*	*	*	*	21	11
P--F--	6680-400-5217	309-109	(02386)		.GAGE, PRESSURE, SAFETY	EA	1	*	*	*	*	21	12
P--F--	6645-783-6334	756-119	(82386)		.TACHOMETER	EA	1	*	*	*	*	21	13
P--F--	6625-321-6365	M5601-3	(74400)		.HOUR METER	EA	1	*	*	*	*	21	14
P--F--	6680-477-6085	MS24532-2	(96906)		.METER, ARBITRARY SCALE	EA	1	*	*	*	*	21	15
P--F--	5905-042-9094	8051-101	(82386)		.DIAL, INDICATOR, FLOW	EA	1	*	*	*	*	21	16
P--F--	4820-767-7529	685-251	(82386)		.RESISTOR, VARIABLE	EA	1	*	*	*	*	21	17
P--F--	6240-155-7866	A361-104	(82386)		.VALVE, 3 WAY SELECTOR	EA	1	*	*	*	*	21	19
P--F--	5930-755-3511	MS15573-3	(96906)		.LAMP, INCANDESCENT	EA	2	*	*	*	*	21	20
P--F--	6210-453-9614	762-115	(82386)		.SWITCH, ROTARY	EA	1	*	*	*	*	21	21
P--F--	5930-548-8265	740-031	(82386)		.LIGHT, INDICATOR	EA	2	*	*	*	*	21	22
P--F--	5930-548-8264	799-132	(82386)		.SWITCH, PUSH	EA	3	*	*	*	*	21	23
P--F--	6685-901-3740	OB1A	(04009)		.SWITCH, PUSH	EA	2	*	*	*	*	21	24
P--F--	4730-804-9310	309-015	(82386)		.GAGE, PRESSURE, DIAL INDICATING	EA	1	*	*	*	*	21	25
P--F--	5310-208-4134	u929MA	(88044)		.CAP, TUBE	EA	1	*	*	*	*	21	26
P--F--	5310-194-1483	MS24400D24	(96906)		.NUT, PLAIN, HEXAGON	EA	1	*	*	*	*	21	27
P--F--	4730-720-4984	MS35333-44	(96906)		.WASHER, LOCK	EA	2	*	*	*	*	21	28
P--F--	5930-548-8264	MS24390D4	(96906)		.TEE, TUBE	EA	1	*	*	*	*	21	29
P--F--	6685-936-6040	OB1A	(04009)		.SWITCH, PUSH	EA	1	*	*	*	*	21	30
P--F--	4810-400-7339	329-014	(82386)		.THERMOMETER, INDICATING	EA	1	*	*	*	*	21	31
P--F--	4730-720-1508	1900PJFG4	(38508)		.VALVE, ANGLE	EA	1	*	*	*	*	21	32
P--F--	4730-804-9310	AN929A4C	(88044)		.CAP, TUBE	EA	1	*	*	*	*	21	33
P--F--	6685-901-3739	MS24390-4	(96906)		.TEE, TUBE	EA	1	*	*	*	*	21	34
P--O--	5355-538-7331	309-087	(82386)		.GAGE, PRESSURE, DIAL INDICATING	EA	1	*	*	*	*	21	35
P--F--	5905-539-3341	.25166-1	(96906)		.KNOB	EA	1	*	*	*	*	21	36
		685-252	(82386)		.RESISTOR, VARIABLE	EA	1	*	*	*	*	21	37

(1) SMR CODE	(2) FEDERAL STOCK NUMBER	(3) DESCRIPTION REF. NUMBER & MFR CODE		USABLE ON CODE	(4) UNIT OF MEAS	(5) QTY INC IN UNIT	(6) 30 DAY DS/GS MAINT ALW			(7) 1-YR ALW PER EQUIP CNTGY	(8) DEPOT MAINT ALW PER 100 EQUIP	(9) ILLUSTRATION	
							(a) 1-20	(b) 21-50	(c) 51-100			(a) FIG. NO.	(b) ITEM NO.
GROUP 08 CONTINUED													
P--O--	5355-538-7331	MS25166-1	(96906)		.KNOB	EA	1	*	*	*	*	21	36
P--F--	5930-960-8996	762-107	(82386)		.SWITCH,ROTARY	EA	1	*	*	*	*	21	38
P--D--	4920-850-6576	711-181	(82386)		.SPRING,HELICAL, TORSION	EA	1				*	21	
GROUP 09 MISCELLIEOUS ELECTRICAL COMPONENTS													
X2-H--	5910-952-1716	679-275	(82386)		CAPACITOR,FIXED,radio	EA	6					19	18
P--F--	4041-400-0114	644-510	(82386)		interference CABLE ASSEMBLY,electrical	EA	1	*	*	*	*	19	19
P--F--	4940-894-0099	AN2551E30	(88044)		interconnect CABLE ASSEMBLY,POWER,dc	EA	1	*	*	*	*	19	
P--F--	6150-373-3550	AN430-6	(88044)		CABLE ASSEMBLY,POWER,ac	EA	1	*	*	*	*	19	

SECTION VII
FEDERAL STOCK NUMBER AND REFERENCE NUMBER INDEX

STOCK NUMBER	FIGURE NO.	ITEM NO.	STOCK NUMBER	FIGURE NO.	ITEM NO.
1650-229-6699	8	1	3110-157-0527	12	5
1730-176-1099	20	19	3110-227-3430	9	2
1730-178-1274	3	16	3110-293-9302	12	42
1730-369-9533	3	11	3110-455-2699	6	
1730-855-6108	1		3110-455-2708	6	
2510-460-6804	5	4	3110-461-3160	12	15
2520-134-7773	3		3110-554-2916	3	15
2520-286-4050	3	1	3110-825-5460	9	3
2520-455-5607	3		3110-828-3668	9	4
2520-455-5662	3		3110-829-9910	19	
2530-248-3709	5	1	3110-902-2704	9	6
2530-248-3710	3	3	3120-456-6932	6	43
2530-454-7878	3	18	3120-456-6934	6	44
2530-455-5663	2		3120-456-6936	6	29
2530-455-5664	2	1	3120-456-6939	6	30
2530-801-2736	3		3120-456-6942	6	31
2530-927-1217	2	13	3120-988-8020	10	4
2540-455-5758	5	5	4010-400-0114	19	19
2590-678-6140	20	17	4140-177-8612	5	13
2805-404-7372	6		4310-456-1267	12	16
2815-443-5537	6		4320-456-1157	12	43
2815-454-7794	6	37	4320-456-1261	5	14
2815-454-7797	6	36	4320-456-1265	12	24
2815-454-7953	6	23	4320-675-6759	19	11
2815-454-7955	6	25	4320-824-1189	12	11
2815-454-7957	6	33	4320-863-2418	12	36
2815-454-7974	6		4320-863-2428	12	2
2815-454-7978	6		4320-934-9510	12	6
2815-454-7980	6		4320-938-3818	12	22
2815-455-5606	6	35	4320-938-3819	12	25
2815-456-1269	6		4320-938-3820	12	29
2815-461-3739	12	37	4320-938-3821	12	33
2815-716-6505	6	21	4330-277-3274	14	3
2815-716-6576	6	3	4330-542-2060	12	
2815-725-1167	6	34	4330-763-1268	13	4
2815-836-4647	6	4	4330-804-1541	15	5
2815-853-6082	6	27	4330-897-2250	13	3
2910-246-3956	7	3	4710-484-0683	4	
2910-287-1930	6		4720-461-3738	19	
2910-420-4898	5	15	4720-484-0555	6	
2910-456-1501	11	5	4720-484-0555	19	9
2910-457-0171	6	6	4720-805-2676	19	
2910-725-3015	6	20	4720-835-1967	19	
2910-847-6746	11	1	4730-050-4207	3	
2910-936-0479	6	7	4730-097-6849	12	20
2910-936-0480	6		4730-277-1916	17	3
2915-420-0955	12		4730-277-6423	11	12
2915-420-0956	19	8	4730-277-6435	17	4
2930-420-7788	5	12	4730-278-3462	3	8
2930-456-5687	6		4730-404-2817	16	1
2930-962-2997	6	11	4730-554-7737	19	
2940-580-6283	6		4730-554-7738	19	
2940-962-2960	6		4730-555-0896	19	
2940-962-2961	6		4730-585-8770	21	26
2990-018-6881	9	1	4730-613-9730	16	
2990-507-8286	9	5	4730-654-1521	19	
2990-824-2172	5	3	4730-711-4411	15	1
2990-827-0029	6	5	4730-720-1508	21	33
3020-400-7278	3	10	4730-720-4984	21	29
3020-454-7951	3		4730-804-9310	21	34
3030-062-8381	5	6	4730-852-1741	11	10
3030-529-0345	5	9	4730-889-2262	19	
3030-725-3012	6		4730-925-4752	15	2
3030-962-2984	6	2	4810-400-7339	21	32
3110-012-0529	6		4810-457-0163	19	17
3110-065-4599	3	6	4810-457-0164	5	
3110-065-4599	3	12	4810-914-0795	12	18
3110-100-6151	12	3	4820-012-5828	19	1
3110-114-5990	19		4820-105-0212	11	13
3110-155-8916	3	5	4820-369-8071	19	

SECTION VII

STOCK NUMBER	FIGURE NO.	ITEM NO.	STOCK NUMBER	FIGURE NO.	ITEM NO.
4820-435-4311	18		5330-125-7662	12	1
4820-456-5596	10	16	5330-125-7664	12	14
4820-767-7529	21	19	5330-186-4939	14	1
4820-783-6665	19		5330-194-3713	14	2
4820-819-7699	10	8	5330-196-6695	15	6
4820-922-8365	18	2	5330-248-3844	18	7
4820-936-9187	19		5330-251-8839	13	2
4820-936-9421	19		5330-251-8839	17	2
4820-960-3842	8	2	5330-255-0115	6	
4920-106-3070	12		5330-440-4900	9	
4920-651-5578	11	7	5330-440-4901	9	
4920-734-0729	12	39	5330-443-6093	12	27
4920-734-0730	12	30	5330-443-6109	6	
4920-734-0735	12	7	5330-454-0528	12	23
4920-735-5030	12	8	5330-454-0531	12	19
4920-740-7343	12	9	5330-455-2713	12	21
4920-771-3166	19		5330-455-2715	6	10
4920-793-0645	19	2	5330-455-2718	18	4
4920-850-6576	21		5330-456-2553	12	4
4920-891-3371	19	3	5330-456-2566	11	16
4920-894-0099	19		5330-456-2567	11	4
5210-178-6770	11	9	5330-456-2568	11	6
5305-454-5997	2	8	5330-456-6968	6	39
5305-889-2997	3		5330-456-6969	6	40
5305-958-5477	4	2	5330-456-6970	6	15
5305-984-4988	10	10	5330-456-6973	6	
5305-984-6193	11	2	5330-461-3179	12	26
5306-206-6266	3	13	5330-461-5833	7	2
5306-453-6311	2	10	5330-463-0471	3	14
5306-937-9348	11	14	5330-579-7544	13	1
5310-045-3299	4	3	5330-579-7914	12	31
5310-045-4007	10	11	5330-579-7927	3	2
5310-081-4219	10	7	5330-582-2855	19	
5310-167-0816	10	12	5330-584-1840	11	15
5310-194-1483	21	28	5330-804-5994	17	5
5310-208-4134	11	11	5330-805-2966	15	3
5310-208-4134	21	27	5330-805-2966	17	6
5310-407-9566	10	6	5330-805-8852	6	
5310-407-9566	15	4	5330-808-0794	17	1
5310-420-5993	11	8	5330-808-0794	19	
5310-458-2329	6	19	5330-815-8860	3	7
5310-461-3145	12	32	5330-815-8860	3	17
5310-483-8747	5		5330-823-4684	3	9
5310-559-0070	11	3	5330-828-1925	12	38
5310-616-3554	3		5330-828-1930	12	12
5310-637-9541	3	4	5330-828-3563	19	
5310-761-6882	10	13	5330-829-0367	8	4
5310-809-3078	10	2	5330-831-6561	19	
5310-809-3078	10	14	5330-843-8783	12	17
5310-809-8533	5		5330-860-1439	18	8
5310-809-8544	4	4	5330-929-5058	12	41
5310-877-5796	10	1	5330-978-2828	18	3
5310-880-7744	10	5	5330-978-2831	18	5
5310-934-9751	20		5330-998-3199	6	18
5310-998-3269	6	24	5340-055-8649	5	2
5315-081-7875	2		5340-324-8619	18	9
5315-455-9993	2	7	5340-461-5799	6	22
5315-455-9994	2	11	5340-461-5803	10	15
5315-461-5610	3		5340-561-1545	19	
5315-816-1794	5		5340-603-2149	19	
5315-839-2325	2		5340-631-0888	19	
5315-941-6406	12	10	5340-660-0997	16	
5325-174-9341	20	5	5340-948-0732	4	5
5325-276-6089	20		5340-990-9298	2	5
5330-020-3053	18	6	5340-990-9300	2	6
5330-052-1849	8	3	5340-991-8386	18	1
5330-070-4126	12	13	5355-538-7331	21	36
5330-118-1139	12		5355-833-3608	4	1
5330-118-1154	12	28	5360-134-3442	10	3
5330-124-5183	12	35	5360-456-2595	3	
5330-125-7661	12	34	5365-403-7816	6	14

SECTION VII

STOCK NUMBER	FIGURE NO.	ITEM NO.	STOCK NUMBER	FIGURE NO.	ITEM NO.
5365-443-6136	3	-	6115-823-4665	2	2
5905-042-9094	21	17	6130-134-5532	20	
5905-539-3341	21	37	6130-477-3931	20	
5910-486-9133	19		6130-566-0347	20	16
5910-952-1716	19	18	6140-497-1697	19	13
5920-783-7859	20	11	6150-373-3550	19	
5930-491-4343	19	5	6210-453-9614	21	22
5930-520-4760	19	12	6210-803-9882	21	5
5930-548-8264	21	24	6220-176-5411	19	16
5930-548-8264	21	30	6220-669-5623	19	15
5930-548-8265	21	23	6240-155-7866	21	20
5930-083-1628	21	3	6240-155-8714	21	6
5930-729-8291	2	4	6240-496-9794	19	
5930-755-3511	21	21	6620-997-0927	6	
5930-795-3864	19	6	6625-016-4519	21	2
5930-812-8702	19	4	6625-321-6365	21	15
5930-960-8996	21	39	6625-668-9747	21	4
5935-149-3236	21	9	6625-760-6174	20	7
5935-581-4558	21	8	6625-811-1868	21	1
5945-134-7122	20	4	6625-857-4350	21	10
5945-421-0801	20	1	6625-958-2498	21	7
5945-421-0802	20	2	6645-228-8846	20	14
5945-421-0803	20	3	6645-783-6334	21	14
5945-500-7195	20	12	6660-891-8815	19	7
5945-660-9314	20	13	6680-400-5317	21	13
5945-681-9716	20	9	6680-455-5799	19	14
5950-400-1464	20	10	6680-457-8609	7	1
5961-134-6082	20		6680-477-6085	21	16
5961-494-4723	20	6	6685-045-3211	10	9
5961-494-4724	20	8	6685-400-5292	21	11
5977-454-5438	19		6685-420-9232	21	12
5977-455-6278	19		6685-901-3739	21	35
6110-228-8829	19	10	6685-901-3740	21	25
6110-400-2754	20	18	6685-936-6040	21	31
6115-400-2755	19				

SECTION VII

Reference No.	Mfg Code	Fig No.	Item No.	Reference No.	Mfg Code	Fig No.	Item No.
A1316-12-0520	00624	6		C614-8018	82386	16	1
A1316-12-0520	00624	19	9	C614-8020	82386	16	2
ACC20A211	01843	8	1	D11226-4	28835	20	4
AC1600E121D40	01414	13	3	EAB700D3	81996	2	5
AC4650F12H	01414	13	4	EAB700D6	81996	2	6
AN2551E30	88044	19		FF707-5	70417	10	4
AN3154-1A	88044	19	13	GA1000104	01843	9	
AN3430-6	88044	19		GA100088	01843	9	
AN380-2-2	88044	2		CA1128-9	01843	8	3
AN6H7A	88044	3	13	GB1012XOH	60380	9	2
AN6230-6	88044	14	2	GB816XOH	60380	9	6
AN6235-2A	88044	12		GG200656	01843	10	9
AN6235-4A	88044	14	3	G1162106	15233	6	1
AN6236-3	88044	15	5	G1605732	15233	6	6
AN6238-1	88044	15	6	K102-29	99664	3	9
AN6244-6	88044	14	1	K102-50	95026	3	14
AN815-4D	88044	15	2	LP3478	61112	5	
AN832-12	88044	17	4	L1775TSCS1	97545	19	1
AN832-24D	88044	11	12	MR36W150AFAAR	81349	21	1
AN929-4D	88044	15	1	MR36W150AFVVR	81349	21	4
AN929A4	88044	21	26	MS15001-4	3		
AN929A4C	88044	21	33	MS15573-3	96906	21	20
AN932-2	88044	3	8	NS15795-206	96906	10	12
AN935-616	88044	3	4	MS15795-212	96906	10	7
AN939-12	88044	17	3	MS19059-49	96906	12	3
AX42	71198	5	6	MS20392-3025	96906	2	
A0301001	15233	6		MS21044N4	96906	10	1
A0301106	15233	6		MS24065-285	96906	5	
A0301205	15233	6	32	MS24168D2	96906	20	13
A0500813	15233	6	42	MS24185D1	96906	20	12
A0805706	15233	6		MS24325-2	96906	3	
A1105706	15233	6		MS24390-4	96906	21	34
A1162106	15233	6		MS24390D4	96906	21	29
A1523009	15233	6	7	MS24392D24	96906	11	10
A1523010	15233	6		MS24397D151	96906	19	
A2205603	15233	6		MS24400D24	96906	11	11
A361-100	82386	19	2	MS24400D24	96906	21	27
A361-104	82386	21	19	MS24523-22	96906	21	3
A361-107150	82386	19	5	MS24532-2	96906	21	15
A361-1219	82386	19		MS24568D1	96906	20	9
A361-135	82386	19		MS25043-16C	96906	21	8
A361-144A1	82386	19		MS25166-1	96906	21	36
A840-6039	82386	11	16	MS25231-313	96906	21	6
A840-6046	82386	11	4	MS25231-9	96906	21	5
BB100083	01843	9	3	MS27183-11	96906	10	2
BB202169	01843	9	4	MS27183-11	96906	10	14
CMD308068A	01843	9	1	MS27183-23	96906	5	
C195-1776	82386	2	1	MS27183-7	96906	4	4
C195-7707	82386	2	3	MS28132-1	96906	20	16
C22-222-01	15233	6	4	MS28741-16-3000	96906	19	
C4U9028	72850	5	14	MS28741-8-3000	96906	19	
C511-2762	82386	7	2	MS28775-014	96906	11	15
C520-1000	82386	1		MS28775-113	96906	19	
C614-1009	82386	11		MS28775-145	96906	3	7
C614-1056	82386	10	16	MS28775-145	96906	3	17
C614-1057	82386	10		MS28775-217	96906	12	31
C614-1066	82386	7		MS28775-225	96906	3	2
C614-1081	82386	4		MS28775-243	96906	13	1
C614-1082	82386	2		MS28778-12	96906	13	2
C614-1092	82386	3		MS28778-12	96906	17	2
C614-1093	82386	3	18	MS28778-16	96906	17	5
C614-3300	82386	21		MS28778-4	96906	15	3
C614-3364	82386	17		MS28778-4	96906	17	6
C614-5001	82386	20		MS28778-8	96906	17	
C614-5020	82386	20	6	MS28778-8	96906	19	
C614-5024	82386	20	8	MS29513-113	96906	18	7
C614-6038	82386	11	6	MS3102A16S8S	96906	21	9
C614-8008	82386	2		MS35190-254	96906	4	2
C614-8011	82386	16	5	MS35206-215	96906	3	
C614-8012	82386	16	4	MS35206-228	96906	10	10
C614-8017	82386	16	3	MS35206-245	96906	11	2

SECTION VII

Reference No.	Mfg Code	Fig No.	Item No.	Reference No.	Mfg Code	Fig No.	Item No.
MS35333-38	96906	11	3	0822701	15233	6	
MS35333-44	96906	21	28	0822702	15233	6	
MS35335-29	96906	3		0824901	15233	6	14
MS35338-41	96906	10	11	1AC63	81300	5	8
MS35338-42	96906	4	3	1G2205603	15233	6	
MS35338-45	96906	10	6	1LL22F4-40S	96259	19	
MS35338-45	96906	15	4	10-2864-7	86768	18	2
MD35489-16	96906	20		100-25-8	47296	19	
MS35489-52	96906	20	5	1000-3-4	47296	19	11
MS35650-302	96906	20		1058	76445	5	5
MS35802-3	96906	6		108-010	82386	11	9
MS39255A31	96906	5	9	108-901	82386	11	8
MS51074-1	96906	20	17	1114007	15233	6	9
MS51329-1	96906	19	15	1121810	15233	6	
MS51967-2	96906	10	13	1122205	15233	6	10
MS51967-5	96906	10	5	1123320	15233	6	11
M5601-3	74400	21	14	12-1455-60-1	86768	18	3
NB4012	80648	3	6	12-556-17	86768	18	1
NB4012	80648	3	12	12-556-51	86768	18	8
OB1A	04009	21	24	1251	71951	19	
OB1A	04009	21	30	1409-504	82386	4	5
RG100155	01843	8	4	1414-003	82386	4	1
RPA388090	01843	19	8	1519601	15233	6	20
SP100-154	86768	18	6	1526001	15233	6	21
SP100-95	86768	18	4	154-009	82386	5	3
SP201-95	86768	18	5	155S5-10D	00624	19	
SP202166	01843	9	5	155S5-16D	00624	19	
SR21C	03479	21	11	155S5-4D	00624	16	
SS10223D1	31117	20	14	155S5-8D	00624	19	
S12 1-2RTF	43991	3	15	155S9-12D	00624	19	
TB14-2026	92867	3	3	155S9-5D	00624	16	
VA200932	01843	8	2	155S9-8D	00624	19	
VA202180	01843	10	8	1672-11	82386	3	
0017001	15233	6	15	1672-26	82386	2	7
002-99973	12027	12	41	1672-5002	82386	2	11
0024709	15233	6	38	1900MFFG4	38508	21	32
004-99974	12027	12	42	1990A	90005	11	1
008-99975	12027	12	43	19954-5	81321	6	
00862	12027	12	6	2-1264-3	86768	11	13
0102-5003	82386	5	11	2-1668	82386	11	7
0111-5701	82386	5	12	204015	77521	12	7
0126301	15233	6	19	204083	77521	12	11
0155S9-16D	00624	19		2207-013	82386	2	4
0213011	15233	6	16	2207-014	82386	19	12
0301-5018	15233	6		2212102	15233	6	
0311001	15233	6	41	2212604	15233	6	
0311301	15233	6	37	2212606	15233	6	
0311414	15233	6	35	2215504	15233	6	
0311415	15233	6	34	2215603	15233	6	5
0311416	15233	6	33	2216803	15233	6	
0311614	15233	6	26	2220305	15233	6	
0311709	15233	6	25	2220306	15233	6	
0311711	15233	6	23	2220307	15233	6	
0316402	15233	6	36	2221807	15233	6	2
0317005	15233	6	40	2222205	15233	6	3
0317006	15233	6	39	2226701	15233	6	
0320101	15233	6	31	2226702	15233	6	
0320201	15233	6	30	3-2054-1	86768	18	9
0320202	15233	6	29	301-005	81321	14	
0322402	15233	6	27	301-073	01414	13	
0322602	15233	6	24	301-091	82386	15	
0325201	15233	6	28	303-068	82386	12	
0506-5803-01	82386	20	18	304-026	82386	19	17
0516804	15233	6	18	309-015	82386	21	25
0520201	15233	6	44	309-087	82386	21	35
0520703	15233	6	43	309-109	82386	21	12
0688-5004	82386	3	5	324-006	82386	11	5
0802518	15233	6	13	326602	15238	6	22
0804229	15233	6	17	329-014	82386	21	31
0817304	15233	6	12	329-020	82386	19	3
0822218	15233	6		3300A61A0008-004	03510	19	

SECTION VII

Reference No.	Mfg Code	Fig No.	Item No.	Reference No.	Mfg Code	Fig No.	Item No.
3300A61A0008G01	03510	19		5661-5001	82386	5	
3300A85A9000-030	03510	20		587-123	82386	5	13
3300A85A9002-027	03510	20		623-015	82386	4	
336-019	82386	7	1	6246-11	47296	19	
353005	77521	12	39	64L	05419	2	9
353013	12027	12	30	644-510	82386	19	19
353015	12027	12	32	6500-080	82386	20	7
353036	77521	12	8	6500-081	82386	20	19
353094	12027	12	40	659-037	82386	5	7
353100	77521	12	29	659-039	82386	5	10
353239	12027	12	16	6656489	81321	6	8
353244	77521	12	25	6663116	81321	6	
353245	12027	12	20	679-275	82386	19	18
353494	12027	12	10	679-341	82386	19	
4009-4A	82386	19		681-2-501-2	82386	19	6
4010-031	82386	18		685-251	82386	21	17
401269	12027	12	13	685-252	82386	21	37
401273	77521	12	18	703009	77521	12	33
401274	77521	12	38	703021	12027	12	37
401278	77521	12	26	703037	12027	12	
401280	12027	12	35	703311	77521	12	22
401284	12027	12	14	7077-0001	82386	19	14
402200	77521	12	12	711-101	82386	2	2
402664	12027	12	19	711-146	82386	3	
402791	12027	12		711-178	82386	10	3
404547	77521	12	17	711-181	82386	21	
404581	12027	12	27	740-031	82386	21	22
405331	12027	12	34	756-107	82386	21	7
405411	12027	12	21	756-110	82386	21	10
405952	12027	12	23	756-119	82386	21	13
4064-4	82386	19	4	757-101	82386	21	2
407590	12027	12	4	762-107	82386	21	39
407757	12027	12	15	762-115	82386	21	21
407767	12027	12	5	778-310	82386	20	10
407897	12027	12	24	783-253	82386	20	1
408001	77521	12	2	783-254	82386	20	2
408013	12027	12	36	783-255	82386	20	3
408018	77521	12	9	799-132	82386	21	23
4083-503	82386	5	4	8000-9009	82386	3	16
408612	12027	12	1	8000-9010	82386	3	
4100-003	82386	2	8	8000-9011	82386	3	11
4100-5005	82386	2	10	8000-9012	82386	3	10
414015	75915	20	11	8000-9013	82386	3	
415-3	71951	19	16	8000-9032	82386	5	1
4479-5003	82386	6		8011-003	82386	19	7
4479-926	82386	5	15	8017-028	82386	3	1
48B7796	88042	5	2	8018-027	82386	19	
490111	12027	12	28	8018-029	82386	20	15
50BC02JDD	03510	19		8023-024	82386	3	
506-504	82386	19		8023-025	82386	3	
506-802	82386	20		8023-027	82386	3	
546-006	82386	7	3	8023-082	82386	11	14
5507-5001	82386	19		8023-5003-01	82386	2	13
55603X1E	43334	19		8023-5003-02	82386	2	12
561-117	82386	19		8030-011	82386	19	10
561-137	81386	10	15	8051-101	82386	21	16

By Order of the Secretary of the Army:

Official:

KENNETH G. WICKHAM,
*Major General, United States Army,
The Adjutant General.*

W. C. WESTMORELAND,
*General, United States Army,
Chief of Staff.*

DISTRIBUTION:

To be distributed in accordance with DA Form 12-31 (qty rqr block No. 86) requirements for organizational maintenance instructions for CH-4 aircraft.

RECOMMENDED CHANGES TO EQUIPMENT TECHNICAL PUBLICATIONS



*THEN...JOT DOWN THE
DOPE ABOUT IT ON THIS FORM.
CAREFULLY TEAR IT OUT, FOLD IT
AND DROP IT IN THE MAIL.*

SOMETHING WRONG WITH PUBLICATION

FROM: (PRINT YOUR UNIT'S COMPLETE ADDRESS)

DATE SENT

PUBLICATION NUMBER	PUBLICATION DATE	PUBLICATION TITLE
--------------------	------------------	-------------------

BE EXACT PIN-POINT WHERE IT IS				IN THIS SPACE, TELL WHAT IS WRONG AND WHAT SHOULD BE DONE ABOUT IT.
PAGE NO.	PARA-GRAPH	FIGURE NO.	TABLE NO.	

PRINTED NAME, GRADE OR TITLE AND TELEPHONE NUMBER	SIGN HERE
---	-----------

The Metric System and Equivalents

Linear Measure

1 centimeter = 10 millimeters = .39 inch
 1 decimeter = 10 centimeters = 3.94 inches
 1 meter = 10 decimeters = 39.37 inches
 1 dekameter = 10 meters = 32.8 feet
 1 hectometer = 10 dekameters = 328.08 feet
 1 kilometer = 10 hectometers = 3,280.8 feet

Weights

1 centigram = 10 milligrams = .15 grain
 1 decigram = 10 centigrams = 1.54 grains
 1 gram = 10 decigrams = .035 ounce
 1 decagram = 10 grams = .35 ounce
 1 hectogram = 10 decagrams = 3.52 ounces
 1 kilogram = 10 hectograms = 2.2 pounds
 1 quintal = 100 kilograms = 220.46 pounds
 1 metric ton = 10 quintals = 1.1 short tons

Liquid Measure

1 centiliter = 10 milliliters = .34 fl. ounce
 1 deciliter = 10 centiliters = 3.38 fl. ounces
 1 liter = 10 deciliters = 33.81 fl. ounces
 1 dekaliter = 10 liters = 2.64 gallons
 1 hectoliter = 10 dekaliters = 26.42 gallons
 1 kiloliter = 10 hectoliters = 264.18 gallons

Square Measure

1 sq. centimeter = 100 sq. millimeters = .155 sq. inch
 1 sq. decimeter = 100 sq. centimeters = 15.5 sq. inches
 1 sq. meter (centare) = 100 sq. decimeters = 10.76 sq. feet
 1 sq. dekameter (are) = 100 sq. meters = 1,076.4 sq. feet
 1 sq. hectometer (hectare) = 100 sq. dekameters = 2.47 acres
 1 sq. kilometer = 100 sq. hectometers = .386 sq. mile

Cubic Measure

1 cu. centimeter = 1000 cu. millimeters = .06 cu. inch
 1 cu. decimeter = 1000 cu. centimeters = 61.02 cu. inches
 1 cu. meter = 1000 cu. decimeters = 35.31 cu. feet

Approximate Conversion Factors

<i>To change</i>	<i>To</i>	<i>Multiply by</i>	<i>To change</i>	<i>To</i>	<i>Multiply by</i>
inches	centimeters	2.540	ounce-inches	Newton-meters	.007062
feet	meters	.305	centimeters	inches	.394
yards	meters	.914	meters	feet	3.280
miles	kilometers	1.609	meters	yards	1.094
square inches	square centimeters	6.451	kilometers	miles	.621
square feet	square meters	.093	square centimeters	square inches	.155
square yards	square meters	.836	square meters	square feet	10.764
square miles	square kilometers	2.590	square meters	square yards	1.196
acres	square hectometers	.405	square kilometers	square miles	.386
cubic feet	cubic meters	.028	square hectometers	acres	2.471
cubic yards	cubic meters	.765	cubic meters	cubic feet	35.315
fluid ounces	milliliters	29.573	cubic meters	cubic yards	1.308
pints	liters	.473	milliliters	fluid ounces	.034
quarts	liters	.946	liters	pints	2.113
gallons	liters	3.785	liters	quarts	1.057
ounces	grams	28.349	liters	gallons	.264
pounds	kilograms	.454	grams	ounces	.035
short tons	metric tons	.907	kilograms	pounds	2.205
pound-feet	Newton-meters	1.356	metric tons	short tons	1.102
pound-inches	Newton-meters	.11296			

Temperature (Exact)

°F	Fahrenheit temperature	5/9 (after subtracting 32)	Celsius temperature	°C
----	---------------------------	-------------------------------	------------------------	----

TM 55-1730-216-25P SERVICING UNIT, MOBILE, MULTIPURPOSE-1970

PIN: 022326-000